

ADVANCED MADE SIMPLE FOR YOU



Advanced Integration
To Enterprise Systems

Advanced Image Quality

Advanced Production
Workflow

imageRUNNER ADVANCE 400i/500i.

ADVANCED OPERATIONAL PERFORMANCE, SIMPLIFIED.

Canon's imageRUNNER ADVANCE technology is now available in a compact, A4 form-factor for the first time ever. Created to be an integral part of your office document ecology, the **imageRUNNER ADVANCE 400i/500i** goes beyond giving you pin-sharp, high speed printouts and full color scans. Link it into your network, and it becomes a truly collaborative device that adds a host of functionality to your entire organization.

Together with Canon Managed Document Services, you can realize even greater productivity, cost savings, and efficiency - all while simplifying the process. Read on and you will see what makes the imageRUNNER ADVANCE 400i/500i an indispensable addition to your office fleet.



ADVANCED USABILITY AND CONVENIENCE



imageRUNNER ADVANCE 400i/500i.
SIMPLY SIMPLER TO USE.

PLUG AND PRINT CONVENIENCE

Standard USB input allows you the convenience to print directly from your thumb drive at the device. You can also add the optional IC Card Reader for easier, secure login.



CONFIGURABLE QUICK MENU

Complex, frequently used settings can be easily configured to run at the touch of a button. You can streamline individual and department workflow to accomplish more in less time.

INNOVATIVE TONER REPLACEMENT SYSTEM

Easy replacement of consumables minimizes downtime so you can get right back to printing quickly. A separate compact E-Drum gives you longer running durability, while the new QF toner uses less heat and time to print. The result is higher productivity and return on investment, with lower environmental impact and total cost of ownership.



INTUITIVE USER INTERFACE



The imageRUNNER ADVANCE 400i/500i offers enhanced usability from the first touch. The full color 7" touchscreen can be tilted to ensure easy access from a wide range of viewing angles. The inbuilt onscreen tutorial guides you every step of the way to completion, ensuring that you fulfill your tasks the first time, every time.





ADVANCED PRODUCTIVITY

Designed to grow your business.



STANDARD HIGH SPEED SCANNING

Press the scan button and the standard Duplex Auto Document Feeder creates up to 100 high quality reproductions for you in a single minute. Recreate your documents in black and white or brilliant color.



ADVANCED imageCHIP ARCHITECTURE

Made to meet the demands of today's businesses, Canon's advanced imageCHIP architecture features two processors working in tandem. The image processor board works with the scanner to provide superior image processing, while the information interface controls and coordinates network and connectivity. Together, they give you better results with less wait.



GENUINE ADOBE POSTSCRIPT 3 AND PCL

imageRUNNER ADVANCE 400i/500i comes standard with Genuine Adobe PostScript 3 and PCL printing capability. True PostScript workflow achieves faster and higher quality prints compared to emulations, and comes with the benefit of direct PDF printing and full support of Adobe fonts. PCL5e and PCL6 compatibility is especially useful for enterprises with an existing PCL print environment. In short, you get full compatibility, desired output quality, and integration to your existing system.

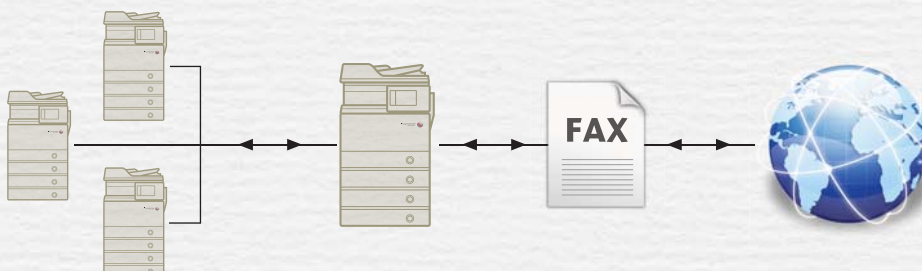


Without Adobe PostScript 3

With Adobe PostScript 3

2-LINE AND REMOTE FAX COLLABORATION

Upgrade to the Super G3 fax option for fast, reliable fax transmissions. Coupled with the 2-line fax feature, you can simultaneously send and receive faxes. You can even save cost by using the Remote Fax Kit to send faxes through other fax-capable imageRUNNER ADVANCE devices within your network, even if the current device being used does not have a fax-board installed.



Remote Fax Kit installed device

Fax-enabled device

SPACE-SAVING INTERNAL STAPLER FINISHER

If you want both space and functionality, upgrade your imageRUNNER ADVANCE 400i/500i with the Internal Stapler Finisher upgrade. This adds a 50-sheet stapling capability without increasing the device's compact footprint.

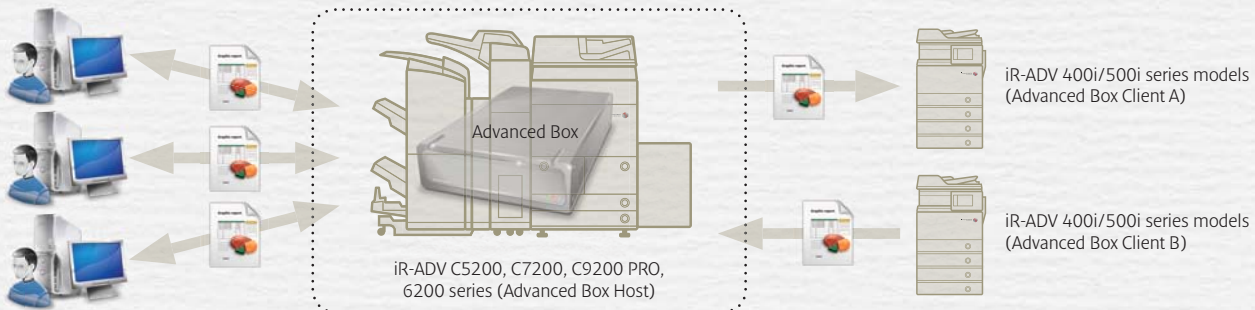


ADVANCED WORKFLOW

Optimized for operational efficiency.

STORE AND ACCESS WITH EASE

Canon's new built-in document sharing solution simply makes sense. Multiple users can collaborate easily on a shared folder and access files from PCs or other networked imageRUNNER ADVANCE systems. Personal folders are also available for more sensitive documents. You can also preview, send, or receive documents from your 400i/500i series when networked with higher end imageRUNNER ADVANCE models with the Advanced Box feature.



SCAN AND SEND

Scan and distribute to multiple destinations easily with Scan and Send. You can send via email, fax or even directly into network folders utilizing a wide range of supported formats. These include standard High Compression PDF, Adobe PDF, Reader extensions, Searchable PDF, Encrypted PDF, XPS and even the latest Office Open XML for PowerPoint.

* Installation of optional accessories may be required.

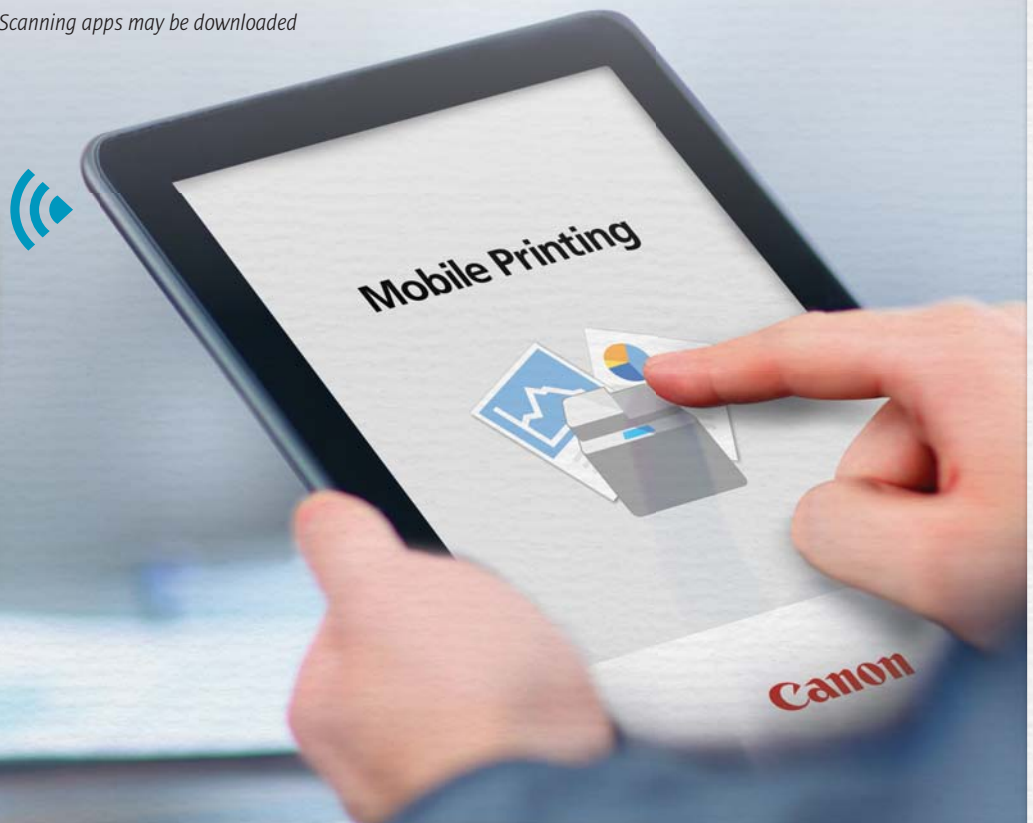


MOBILE PRINTING AND SCANNING

For users on the go, the versatile imageRUNNER ADVANCE 400i/500i provides simple mobile print functionality with features to help mobile device users print jobs from their devices. It supports a wide variety of formats including image, photo, PDF files and web pages.

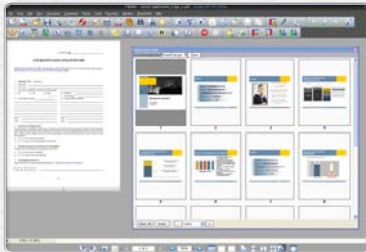
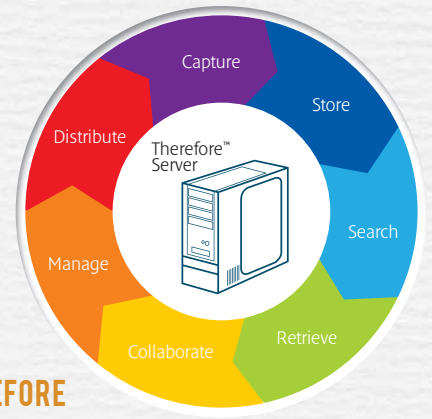
Mobile users can also use the Canon Mobile Scanning for Business to scan and save data on their mobile devices, upload it to cloud storage services and send it as e-mail attachments to themselves.

* Canon Mobile Printing and Canon Mobile Scanning apps may be downloaded on Apple or Android devices.



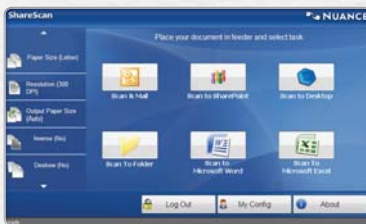
ADVANCED SOLUTIONS

The answer to your business needs.



eCOPY PDF PRO OFFICE

eCopy® PDF Pro Office is an enterprise-ready PDF solution from Nuance. It is the smarter PDF desktop companion for Canon multifunctional devices. It is easy to use and powerful, letting you create, convert, and collaborate for increased productivity and cost savings.



eCOPY SHARESCAN SUITE

eCopy® ShareScan Suite transforms paper-based data safely and directly into electronic workflows. You can scan, extract, classify, index and convert paper documents into digital information right from the multifunctional device to the electronic channels of your business.

THEREFORE

Therefore is a holistic document management system that offers an easy-to-implement storage and retrieval system to give every user instant, secure access to important information.



uniFLOW

uniFLOW is designed to save you time and money by providing effective controls over your entire multifunctional fleet. Select from different uniFLOW components that best complements your business requirements.

MEAP PLATFORM

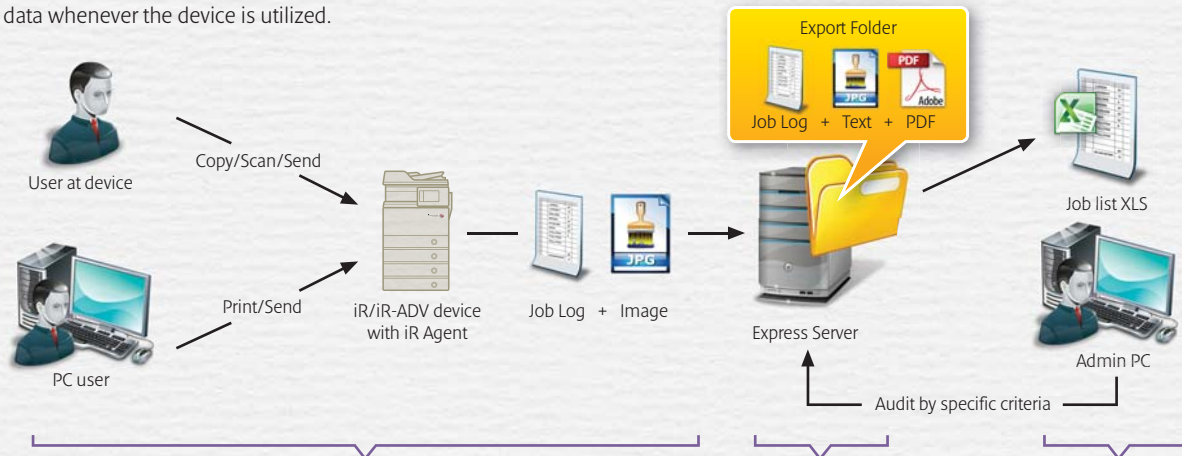
The MEAP platform on imageRUNNER ADVANCE enables powerful software to interface with the multifunctional device for even greater capabilities.

UNIVERSAL LOGIN MANAGER

A unique, server-less solution created for imageRUNNER ADVANCE devices, the Universal Login Manager offers convenient login and tracking functionality. Easy to implement and cost saving, the Universal Login Manager can also be upgraded to uniFLOW for more advanced features.

iW SECURE AUDIT MANAGER EXPRESS

This software enables document distribution oversight and safeguards against potential information espionage or abuse by logging text and image data whenever the device is utilized.



01 On-device imageRUNNER Agent captures log and image data

02 Info is sent to Express server for OCR; image and text exported

03 Express Audit Tools allows compilation and extraction of key info



iW ACCOUNTING MANAGER FOR MEAP

Track your organization's print consumption through detailed and vital information of how your devices are actually used, all without the need for additional manpower or equipment.

ADVANCED MANAGEMENT AND SECURITY

Monitor and manage your business advancement.

CENTRALIZED REMOTE CONTROL

The Remote User Interface lets IT managers and system administrators control, track, and manage each output device without having to travel to each and every machine for status checks.

eMAINTENANCE

Take control of your Canon device fleet and reduce administrative burdens with eMaintenance®. Easy maintenance and lower downtime means you will keep your organization's productivity going.

ACCESS MANAGEMENT SYSTEM KIT

By utilizing the Access Management System Kit, administrators can easily set up roles and control user access on individual devices and restrict some features. It provides predefined roles for every business user such as Administrator, Power User, Limited User, and Guest. Together with contactless Card Authentication unit, you can heighten your security while preventing unauthorized access.

MANAGED DOCUMENT SERVICES

The bigger the enterprise, the greater the likelihood for hidden costs and inefficiencies. Our managed document services consultancy takes a methodical approach to understand your unique challenges while helping to advise, optimize, and save.



ADVANCED RESPONSIBILITY

Here are some highlights:

100% RESPONSIBLE

Every imageRUNNER ADVANCE is built from recycled plastics from past products. In addition, we subject ourselves to the most stringent standards, restricting the use of 24 hazardous substances (where EU RoHS directives restrict only six).

ENERGY SAVER IN EVERY WAY

The imageRUNNER ADVANCE 400i/500i series features the self-lit Energy Saver hard key instead of the conventional Power hard key. This minimizes power consumption when the device goes to sleep mode.

HIGHER EFFICIENCY MEANS LOWER EMISSIONS

By optimizing the document life cycle, we have lowered CO² emissions by more than 30% over previous models.

CHANGING OUR BEHAVIOR TO CONSERVE OUR ENVIRONMENT

By encouraging digital workflows, we reduce unnecessary prints and reduce mistakes. Administrators can also help encourage use of duplex settings and control color usage easily.

SCHEDULED TO SAVE

Administrators can opt to automatically shut down devices at a scheduled date and time. This reduces unnecessary wastage during after office hours and non-working days.

QUICKER, YET GREENER

Our innovative Quick Fixing (QF) toner is capable of low-heat, on-demand fusing. This has a threefold benefit: Faster high quality prints, lower power consumption, and a greener environment.

SPECIFICATIONS imageRUNNER ADVANCE 500i/400i Series

Type	Reader-printer combined, Console	
Resolution for Reading	600 x 600dpi (Black-and-White) 300 x 300dpi (Full Color)	
Resolution for Writing	Copy: 600dpi x 600dpi Print: 1200dpi x 1200dpi	
Paper Weight	Paper Drawer	64 g/m ² to 105 g/m ²
	Multi-Purpose Tray	64 g/m ² to 128 g/m ²
Acceptable Originals	Sheet, book, and three dimensional objects (up to 2kg)	
Maximum Original Size	A4	
Paper Sizes	Paper Drawers 1, 3, and 4	A4, B5, A5, and Custom size (139.7mm x 210mm to 216mm x 355.6mm)
	Paper Drawer 2	A4, A5, B5, Envelopes (COM10 No.10, Monarch, DL, and ISO-C5)*1
	Multi-Purpose Tray	A4, B5, A5 Custom size (99mm x 139.7mm to 216mm x 355.6mm) Envelopes (COM10 No.10, Monarch, DL, and ISO-C5)
Warm-Up Time	34 seconds or less	
First Copy Time	5.0 seconds or less	
Copy Speed (Sheets per minute) (Except when paper is fed from the stack bypass)	IR-ADV 500i	A4 ▶ 50, A5 ▶ 25, B5 ▶ 25
	IR-ADV 400i	A4 ▶ 40, A5 ▶ 25, B5 ▶ 25
Paper Feeding System	Paper Drawers 1, 3, and 4	550 sheets (80 g/m ²)
	Paper Drawer 2	550 sheets (80 g/m ²) 50 envelopes*1 (or 30mm or less in height) or 12 cpm
	Multi-Purpose Tray	100 sheets (80 g/m ²)
Multiple Copies	999 sheets	
Memory	1.5GB RAM	
Supported OS	PCL	Windows 8.1/8/7/Vista/XP/Windows Server 2012 R2/Server 2008 R2/Server 2008/Server 2003 R2
	Adobe PostScript 3	Windows 8.1/8/7/Vista/XP/Windows Server 2012 R2/Server 2008 R2/Server 2008/Server 2003 R2/Mac OS X 10.5.8 and later
	UFR II	Windows 8.1/8/7/Vista/XP/Windows Server 2012 R2/Server 2008 R2/Server 2008/Server 2003 R2/Mac OS X 10.5.8 and later
Mac-PPD	Windows 8.1/8/7/Vista/XP/Windows Server 2003/Server 2008/Mac OS X (10.2.8 or later)/Mac OS (9.1 or later)	
Hard Disk Capacity	160GB (up to 80GB to be used)	
Network Interface	10Base-T/100Base-TX/1000Base-T (RJ-45)	
Power Source	220-240V AC, 50/60Hz, 5.0 A	
Power Consumption	Maximum Power Consumption: 1.6kW When the machine is in the Sleep mode*: 1W When the main power switch is turned OFF: 0.5W * Depending on the system and conditions of use, these values may differ	
Dimensions (H x W x D)	633mm x 560mm x 567mm	
Installation Space (W x D)	787mm x 567mm (when the multi-purpose tray is extended)	
Weight	Approx. 47.9kg	
Toner Yield (A4, 6% coverage)	Approx. 15,200 sheets	
Drum Yield	IR-ADV 500i	Approx. 112,000 sheets
	IR-ADV 400i	Approx. 97,000 sheets
Feeder		
Type	Automatic Document Feeder	
Size of Originals	A4, A5, B5	
Original Paper Weights	One-sided originals	42 g/m ² to 128 g/m ²
	Two-sided originals	50 g/m ² to 128 g/m ²
	Color originals	64 g/m ² to 128 g/m ²
Tray Capacity	100 sheets (80 g/m ²)	

To arrange for a demonstration, contact any of our offices below.

SOUTH & SOUTHEAST ASIA REGIONAL HEADQUARTERS

Canon Singapore Pte. Ltd.

1 Fusionopolis Place, #15-10, Galaxis, Singapore 138522

Tel: +65-6799 8888 | Fax: +65-6799 8882 | www.canon-asia.com | www.canon.com.sg

CANON SALES SUBSIDIARIES & BUSINESS PARTNERS

Hong Kong:

Canon Hongkong Co., Ltd.

19/F, The Metropolis Tower, 10 Metropolis Drive, Hung Hom, Kowloon, Hong Kong

Tel: 852-3191 2388 | Fax: 852-2369 3800 | www.canon.com.hk

India:

Canon India Private Limited

7th Floor, Tower B, Building #5, DLF Epitome, DLF Phase III,

Gurgaon 122002, Haryana, India

Tel: 91-124 416 0000 | Fax: 91-124 416 0011 | www.canon.co.in

Indonesia:

PT Samafitro

Jalan Ir. H Juanda No.8, Jakarta 10120, Indonesia

Tel: 62-21-345 8989 | Fax: 62-21-345 6699 | www.samafitro.co.id

Malaysia:

Canon Marketing (Malaysia) Sdn. Bhd.

Block D, Peremba Square, Saujana Resort, Section U2,

40150 Shah Alam, Selangor Darul Ehsan, Malaysia

Tel: 60-3 7844 6000 / 7845 0055 | Fax: 60-3 7844 6196 / 6198

www.canon.com.my

This document is for information purpose only and the contents are subject to change without notice. Product options, name and availability may vary by regions. Nothing in this document should be construed as a warranty. We expressly disclaim any liability or contractual obligations with respect to this document.

Canon, imageRUNNER, imageRUNNER ADVANCE, imageCHIP, RAPID Fusing System, MEAP, eMaintenance, iW, Business can be simple and get Smart get genuine are trademarks of Canon Inc. and/or its affiliates. "MEAP" is a trademark of CANON Inc., referring to an "application platform" for Canon multifunction and single function printers. Other names may be the trademarks of their respective owners.

uniFLOW, eCopy and Therefore are independent party software distributed by Canon Singapore Pte. Ltd.



Managed Document Services



iR ADVANCE Features



Cloud Computing

To integrate more capabilities into your imageRUNNER ADVANCE device, simply speak with your friendly Canon representative.

Original Scanning Speed	Copying: 1-sided scanning: 50 sheets/minute (A4 in Black-and-White at 600dpi) Scanning: 1-sided scanning: 50 sheets/minute (A4 in Black-and-White at 600dpi/Color at 300dpi) 25 sheets/minute (A4 in Color at 600 x 300dpi)	
Send Function		
Communication Protocol	FTP (TCP/IP), SMB (TCP/IP), WebDAV	
Data Format	TIFF, JPEG, PDF, XPS, OOXML (PowerPoint)	
Resolution	Black-and-White: 100 x 100dpi, 150 x 150dpi, 200 x 100dpi, 200 x 200dpi, 200 x 400dpi, 300 x 300dpi, 400 x 400dpi, 600 x 600dpi Color: 100 x 100dpi, 150 x 150dpi, 200 x 100dpi, 200 x 200dpi, 300 x 300dpi	
Color Mode	Automatic-Color Select (Full Color/Grayscale), Automatic-Color Select (Full Color/Black-and-White), Full Color, Grayscale, Black-and-White	
Optional PDF/XPS/OOXML Functions	PDF	Compact, Trace and Smooth, Encryption, OCR, Device Signature, User Signature, Optimization for Web*, PDF/A-1b, Reader Extensions * PDF files optimized for Web viewing
	XPS	Compact, OCR, Device Signature, User Signature
OOXML	PowerPoint, OCR	
Optional Accessories		
Cassette Module-AA1		
Paper Sizes	A4, A5, B5, and Custom size (139.7mm x 210mm to 216mm x 355.6mm)	
Paper Capacity	550 sheets x 1 drawer (80 g/m ²)	
Power Source	From main unit	
Power Consumption	20W or less	
Dimensions (H x W x D)	119mm x 540mm x 500mm	
Weight	Approx. 7.7kg	
Stapler Finisher-R1		
Paper Weight	64 g/m ² to 128 g/m ²	
Capacity	Collate/Group/No finish mode	500 sheets (or 73.5mm in height)
	Staple mode	20 sets (or 73.5mm in height)
Max. Stapling Capacity/ Available Staple Size	Corner Staple mode: 64 to 90 g/m ² : 50 sheets 91 to 105 g/m ² : 50 sheets 106 to 128 g/m ² : 30 sheets	
Available Staple Size	A4/B5	
Available Offset Size	A4/B5	
Power Source	From main unit	
Power Consumption	Approx. 50W or less	
Dimensions (H x W x D)	263mm x 798mm x 395mm	
Weight	Approx. 10.5kg	
Other Accessories And Supplies		
Copy Card Reader-F1, Card Reader Attachment-C2, Copy Control Interface Kit-A1, IC Card Reader Box-A1, FL Cassette-A51, Staple-P1, Drum Heater-F1, PCL Font Set-B1 EFIGS, Barcode Printing Kit-D1, Direct Print Kit (for PDF)-H1, Direct Print Kit (for XPS)-H1, Super G3 Fax Board-AM1, Super G3 2 nd Line Fax Board-AM1, Remote Fax Kit-A1, Universal Send Advanced Feature Set-D1, Encrypted Printing Software-D1, Web Access Software-H1, Universal Send Digital User Signature Kit-C1, Universal Send Security Feature Set-D1, HDD Encryption Kit-C6, Access Management System Kit-B1, IR-ADV Security Kit-H1, Secure Watermark-B1, ADF Access Handle-A1, Remote Operators Software Kit-B1, NPG-55 Drum Unit, NPG-61 Toner Black		
*1 The optional Envelope Cassette-E1 is required		



Philippines:

Canon Marketing (Philippines), Inc.

7F Commerce and Industry Plaza, 1030 Campus Avenue corner Park Avenue,

McKinley Hill, Fort Bonifacio, Taguig City, Metro Manila, Philippines 1634

Tel: 632-884 9090 | Fax: 632-556 1456 | www.canon.com.ph

Thailand:

Canon Marketing (Thailand) Co. Ltd.

No.98 Sathorn Square Office Tower, 22nd -24th floor, North Sathorn Road,

Silom, Bangrak, Bangkok 10500

Tel: 66-2 344 9999 | Fax: 66-2 344 9960 | www.canon.co.th

Dealer's Stamp