

EOS

Canon

Delighting You Always

WOW NOW

VIDEOGRAPHY • PHOTOGRAPHY



Create Wow Now with
Full-Frame Mirrorless


EOS R8

Upto
40
Frames
Per Sec

Eye Detection
AF

ISO 
102400

 **60p**
4K

 **180p**
High Frame Rate
HD Movie



Click on the feature of your interest to learn more!

INTRODUCTION

1 ▶ About Canon EOS R8

IMAGE QUALITY

2 ▶ Approx. 24.2MP High Image Quality

DRIVE & AUTOFOCUS

3 ▶ High-Speed Continuous Shooting

4-5 ▶ EOS iTR AF X Subject Detection

6 ▶ Wide AF Coverage

HIGH PERFORMANCE

7 ▶ High Sensitivity in Low Light

8 ▶ High Dynamic Range

9 ▶ Hybrid Auto Mode



MOVIE

10 ▶ 4K 60p | Aspect Marker | FHD 180p

11 ▶ HDR PQ | Canon Log 3 | Pre-Recording (Movie)

12 ▶ Movie Exposure Tools

13 ▶ Focus Breathing Correction | Movie Digital IS

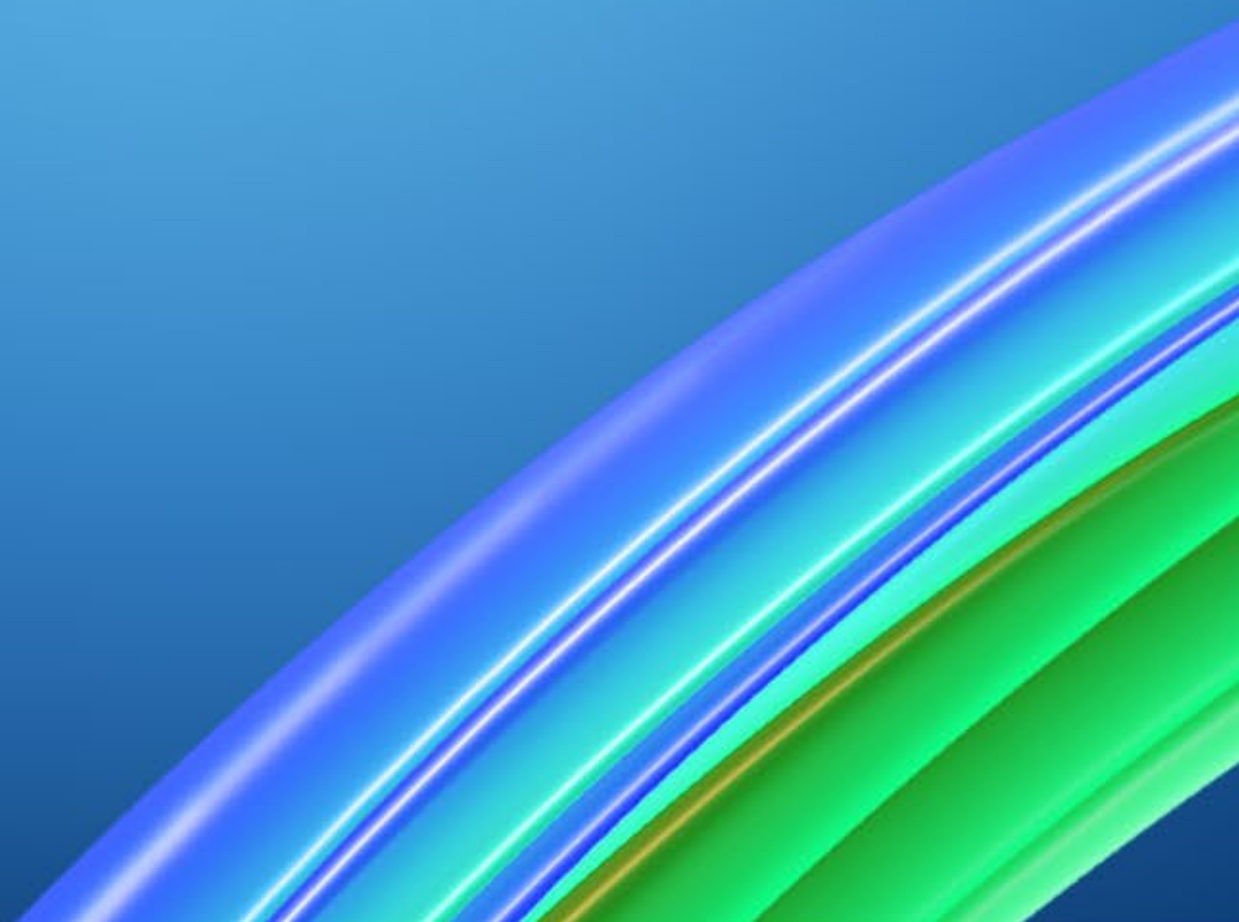
CONNECTIVITY & OPERABILITY

14 ▶ Connectivity | Webcam Support

15 ▶ Ergonomic Design | Accessory Options

16 ▶ Extensive Lens Options

17 ▶ Specifications



LIGHT IN WEIGHT, HEAVY ON PERFORMANCE



The Lightest EOS Full-Frame Mirrorless Ever Built

Go light and create more with the Canon EOS R8 full-frame mirrorless camera! This approx. 24.2-megapixel camera is super lightweight at just 461g, but packs a heavy punch with high-spec performance. For budding photographers and videographers who want a high performance, lightweight and future-proof content creation tool—this is your perfect match!

CAPTURE GREAT PHOTOS



- Up to 40fps Burst Shooting
- High ISO
- Up to EV -6.5 AF Sensitivity
- High Dynamic Range



- Approx. 24.2MP Full-Frame Sensor
- Lightweight
- Deep Learning Subject AF Detection & Tracking (EOS iTR AF X)
- Wide Area AF
- Improved Design Ergonomics



- 4K 60p (6K oversampling)
- Full HD 180p
- Movie Digital IS
- HDR PQ
- Canon Log 3
- Focus Breathing Correction
- Exposure Management Tools
 - Zebra Pattern
 - False Colour



PREV

MENU

NEXT

APPROX. 24.2MP HIGH IMAGE QUALITY

24.2 MEGA
PIXELS
CMOS

Full-Frame CMOS Sensor • DIGIC X Image Processor

The EOS R8 houses an approx. 24.2MP full-frame CMOS sensor and is powered by the advanced DIGIC X image processor for crisp-sharp, high quality imagery with less noise for both photos and videos. It supports low light sensitivity at up to EV -6.5 (Stills) / EV -4.0 (4K Movie), offers up to ISO 102,400 in low-light conditions, as well as Digital Lens Optimizer* to correct aberrations and diffraction blur.

*For supported lenses.

FULL
FRAME
CMOS

DiGiC
X

ISO 
102400



PREV

MENU

NEXT

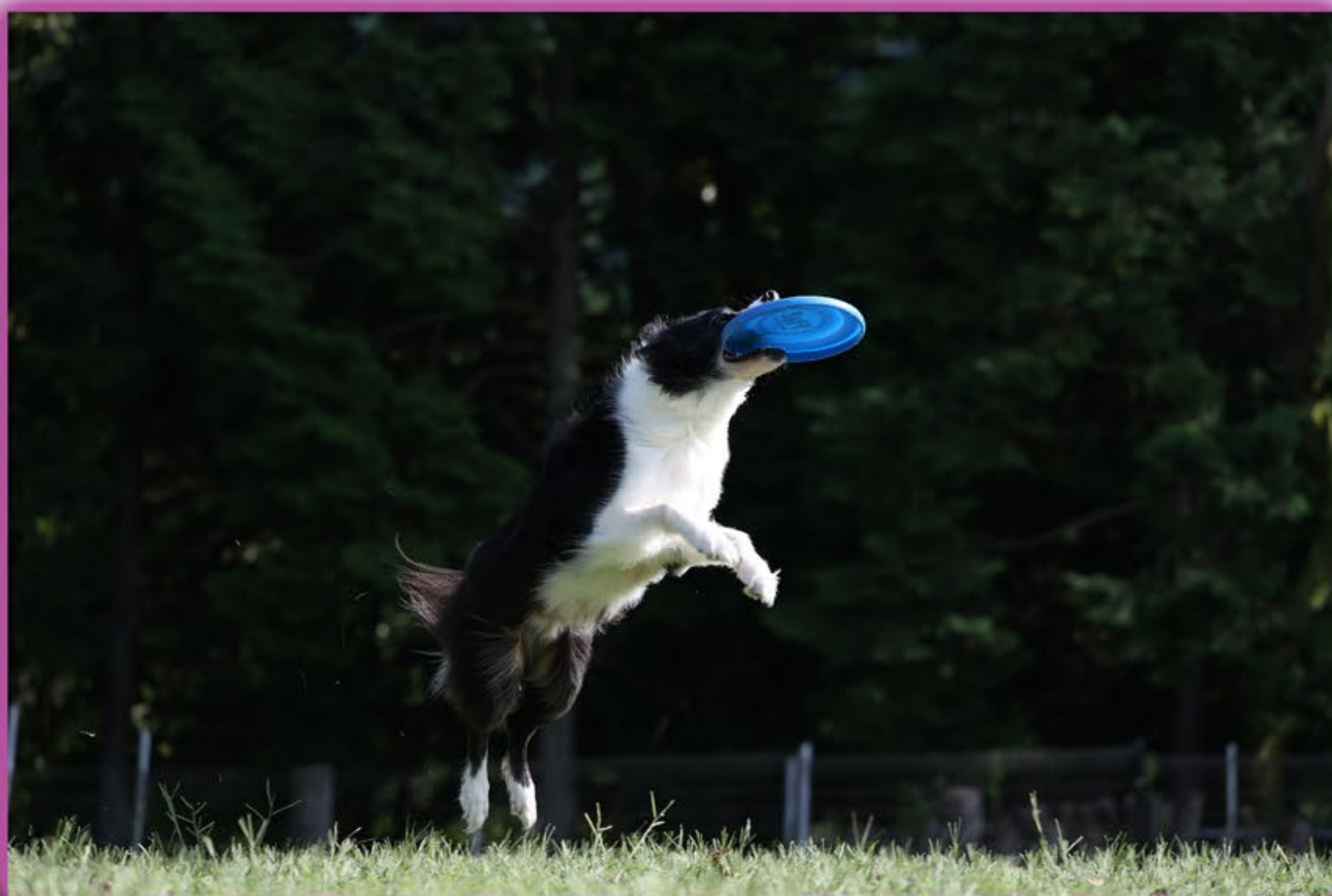
HIGH-SPEED CONTINUOUS SHOOTING

Upto
40
Frames
Per Sec

High-Speed Burst Shooting with Electronic Shutter

Capture every decisive moment in style with ultra-fast continuous shooting speeds of up to 40fps in electronic shutter with AF/AE tracking. The EOS R8 also allows up to approx. 30fps RAW burst mode + Pre-shooting that helps to capture moments 0.5 seconds before the shutter button is pressed. This helps to reduce instances of missed opportunities during shoots!

Note: Rolling shutter distortion may occur depending on the subject and shooting conditions.



Up to
40fps
(Electronic Shutter)

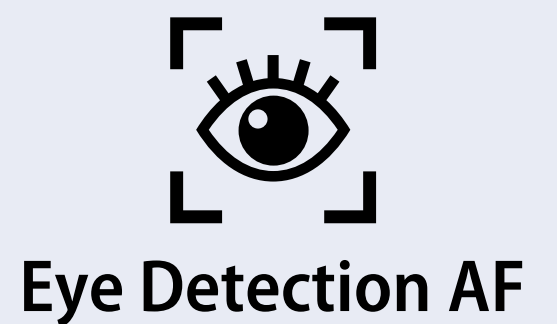


PREV

MENU

NEXT

EOS iTR AF X SUBJECT DETECTION



 **Eye | Face | Head | Body**

The EOS R8 uses EOS iTR AF X (Intelligent Tracking & Recognition Autofocus), which is algorithm-driven, deep learning technology that automatically detects and tracks the subject, allowing you to give full attention to composition. This is especially useful for getting precise in-focus photos and videos of moving subjects!

Equipped with the ability to automatically detect the eye, face, head or body of the human subject, you can now create amazing portraits and capture the soul of the moment.

Eye detection is useful when subjects shift around for poses, and works even when the eye is partially obscured by hair or mask! Additionally, with Left/Right Eye Priority AF, you can flexibly switch focus between the eyes during stills or video recording.

Eye Detection AF

Left/Right
Eye Priority





PREV

MENU

NEXT

EOS iTR AF X SUBJECT DETECTION

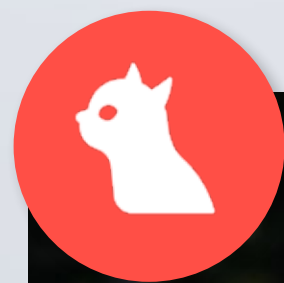
 **Dog | Cat | Bird | Horse**
 **Car | Motorcycle | Train | Plane**

The EOS R8 stands ready to capture every candid moment of your favourite animal(s) with the Animal Priority AF, which is capable of detecting and tracking dogs, cats, horses and birds—making pet and wildlife photography a breeze from now on!

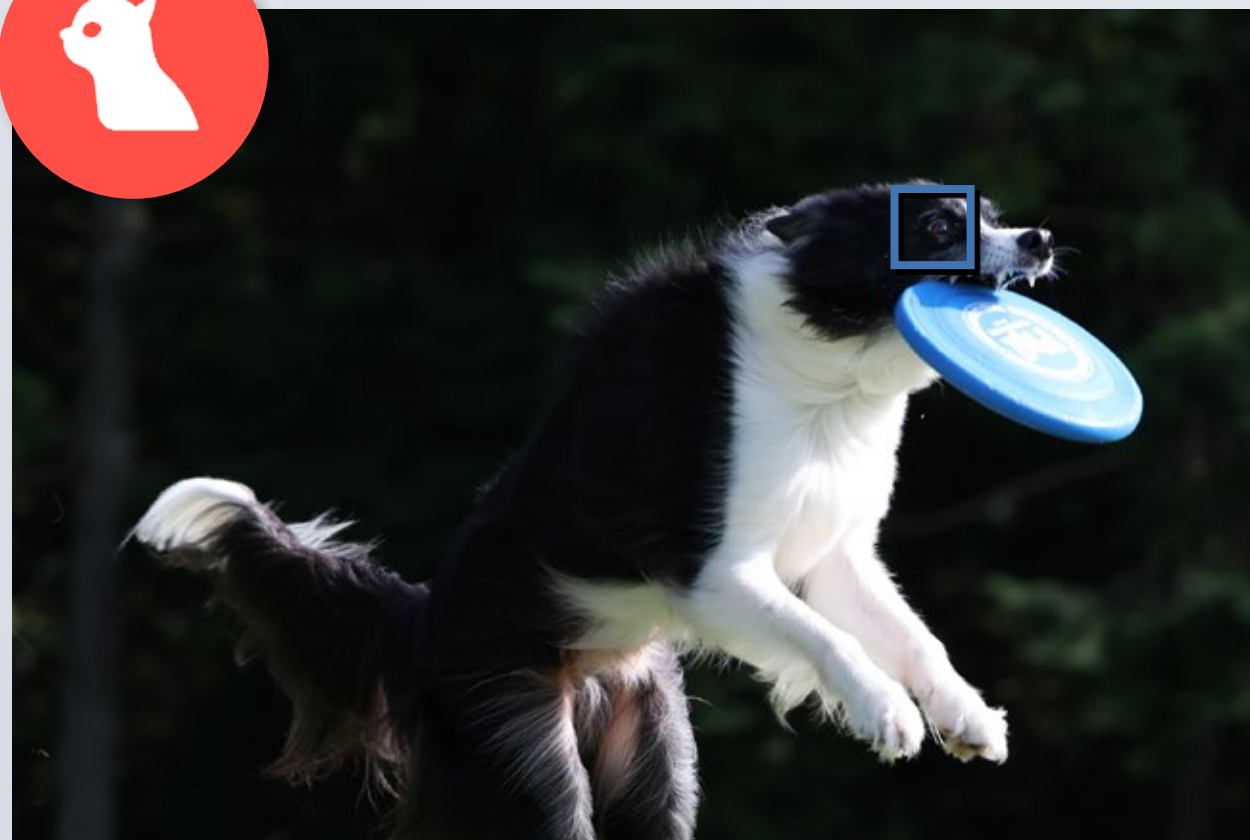
Meanwhile, cars, motorcycles, jets & train-spotting enthusiasts alike will find the Vehicle Priority AF super handy as well!

EOS iTR AF X

Enhanced Subject
Detection & Tracking



ANIMAL PRIORITY



VEHICLE PRIORITY



PREV

MENU

NEXT

WIDE AREA AF

Dual Pixel CMOS AF II

Accurately track your subject no matter where they are in the frame. Subject tracking over a wide area (100% horizontal x 100% vertical) is available on the EOS R8 thanks to Dual Pixel CMOS AF II, which offers up to 1,053 selectable AF zones for automatic selection.

This means that even subjects at the frame edge or periphery can be in focus, while you can re-write the rules by going all-out creatively with unique composition.



- **90% x 100% (No subject)**
- **100% x 100% (Subject detected)***

*For details on supported lenses, refer to supplementary information of Canon EOS R8 [cam.start.canon](https://www.canon.com/cam.start.canon)

PREV

MENU

NEXT

AF SUPPORT IN LOW LIGHT

UP TO EV
-6.5

With Dual Pixel CMOS AF II, tracking stability is high even in dark scenarios. With EV ranging from -6.5 to 21 for photos, and -4.0 to 21 for 4K movies, you'll enjoy AF support in a wide range of situations from glaring bright environments to pitch-dark scenes.

What's more, the EOS R8's high sensitivity of up to ISO 25,600 (Movie) and ISO 102,400 (Photo) allows it to deliver high image quality with suppressed noise.



PHOTOS

EV

-6.5 to 21

ISO

Up to

102,400

expandable to

204,800



MOVIE

EV

-4.0 to 21

ISO

Up to

25,600

expandable to

102,400[∞]

[∞]When set to 4K 59.94p/50p, maximum expanded ISO speed is equivalent to ISO 51,200.

PREV

MENU

NEXT

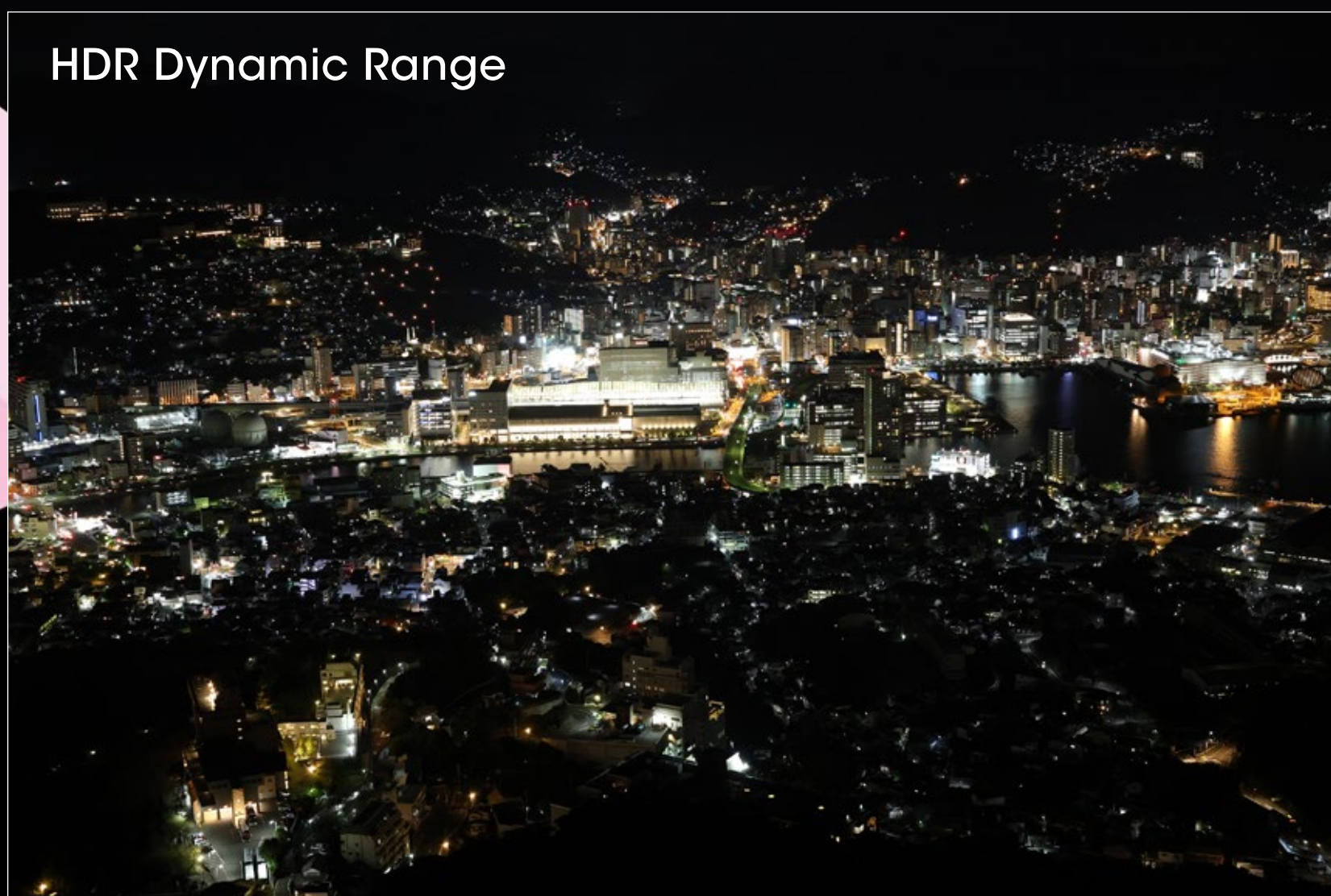
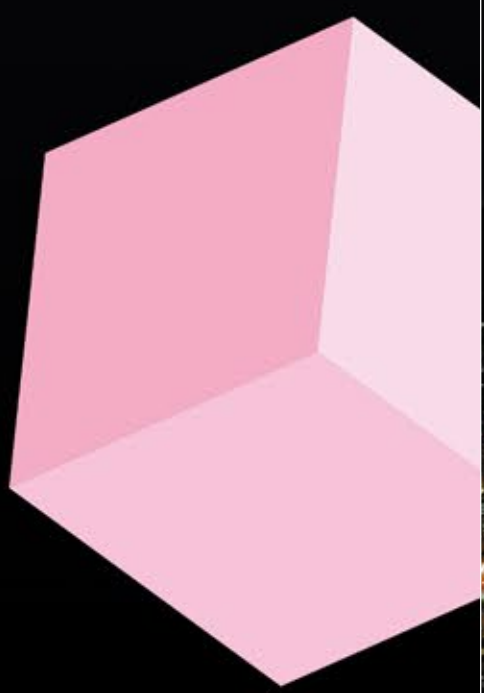
HIGH DYNAMIC RANGE

HDR

High Dynamic Range

HDR (Moving Subject) | HDR (Dynamic Range)

Capture rich, breathtaking high dynamic range (HDR) shots on the EOS R8 with more highlight and shadow details in scenes that have a huge disparity in brightness. By enabling HDR PQ in combination with HDR (Moving Subject) or HDR (Dynamic Range) modes, it's possible to express high brightness up to approx. 3000 nits on HDR-compatible monitors, creating realistic imagery closer to what our eyes perceive.



HDR Mode (Dynamic Range) combines 3 shots taken at different exposure levels into 1 composite HDR shot, delivering hyper-real visuals while balancing highlights and shadows in great detail.



Sometimes, subjects can move between frames while the 3 shots are being taken. This is where HDR Mode (Moving Subject) comes in handy, making it possible to capture single-shot HDR imagery of moving subjects with ease!

PREV

MENU

NEXT

HYBRID AUTO MODE

Hybrid Auto mode is a hassle-free, convenient way to produce easy video content even if you're just taking photos. Each time a photo is taken using this mode, short scenes are also being recorded for approx. 2 to 4 seconds before the shutter is released. Thereafter, the camera automatically compiles these short clips as well as your photos taken in the same day into a digest movie (max FHD 30p).

ONE DAY OF TAKING PICTURES



SHUTTER RELEASE

A movie of the scene right before shutter release (2 to 4 sec.)



SHUTTER RELEASE

SHUTTER RELEASE



These short pieces of motion picture are automatically compiled into a digest movie.

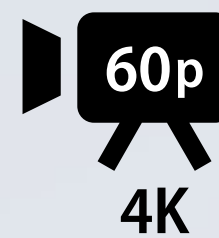


PREV

MENU

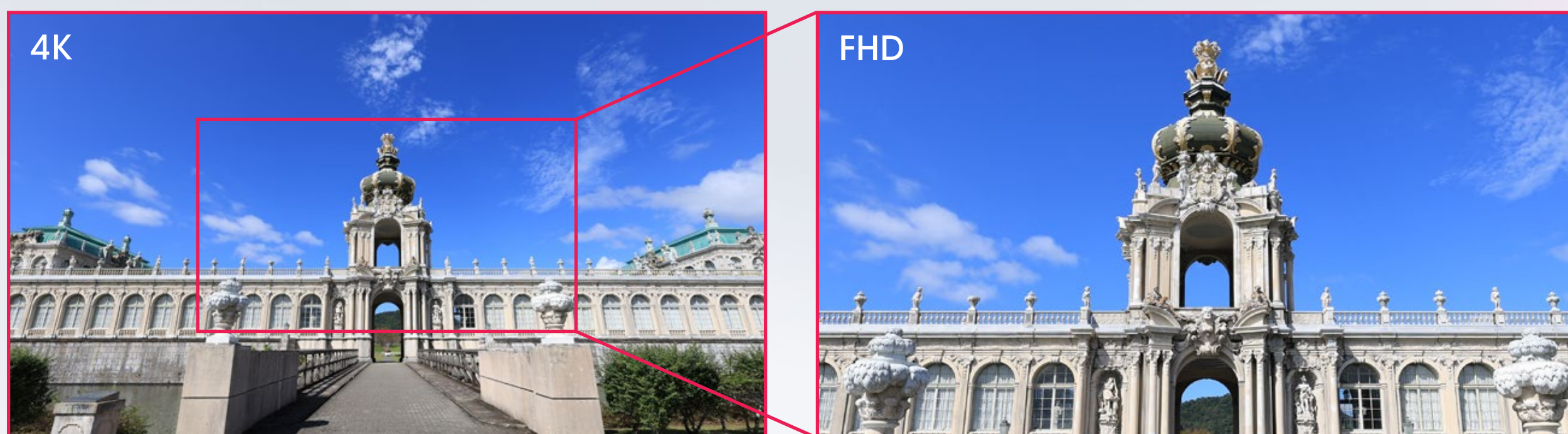
NEXT

CREATE STUNNING VIDEOS



4K 60p • 4K Time-lapse

4K UHD 60p movies are processed using a 6K oversampling debayer algorithm, which is typically used in the Cinema EOS System, for excellent resolution and colour reproduction. You can also record time-lapse videos in stunning 4K to wow your audience.



Aspect Marker

Make content that fits your favourite social media platform like a glove with the Aspect Marker function! Have visual markers of your preferred aspect ratios displayed during shooting to better assist you with framing and composition.

2.35:1* (CinemaScope)

1:1, 4:5, and 5:4*

9:16*



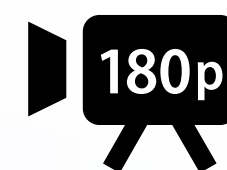
*All aspect ratios are for horizontal orientation of the camera.

High Frame Rate 180p FHD

Add impact to your movies by slowing down the action with high frame rate Full HD 180p^Δ movie recording, and let the slow-motion effect (up to 6 x slower^Ω than normal playback) infuse some dramatic effects to complete your storytelling.

^Δ High frame rate 180p shooting is not possible when using an RF-S / EF-S lens or when movie crop is set.

^Ω When compared to 30p.



High Frame Rate
HD Movie



Full HD
180p movie
recording

PREV

MENU

NEXT

SHOOT FLEXIBLY, PRODUCE BEAUTIFULLY

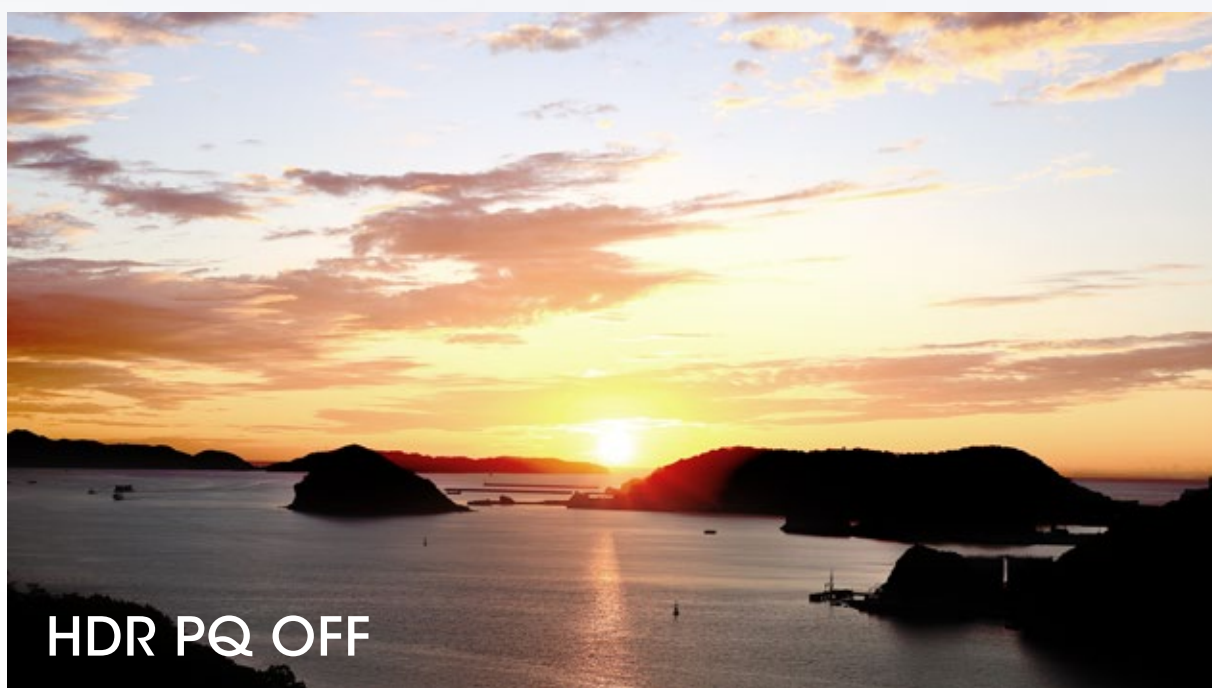


HDR PQ • Canon Log 3

The EOS R8 offers flexible 8-bit and YCbCr 4:2:2 10-bit options that suit both casual content creators as well as professionals who need post-production colour adjustments.

Simplify your workflow with a Picture Style preset, or use HDR PQ for recording HDR-compatible movies with high brightness, wide gradation and wide colour gamut, without the need for colour grading.

But if you prefer greater colour control in post-production, then shooting in Canon Log 3 can also allow richer colour expression, even in high-contrast scenes.



Pre-Recording (Movie)

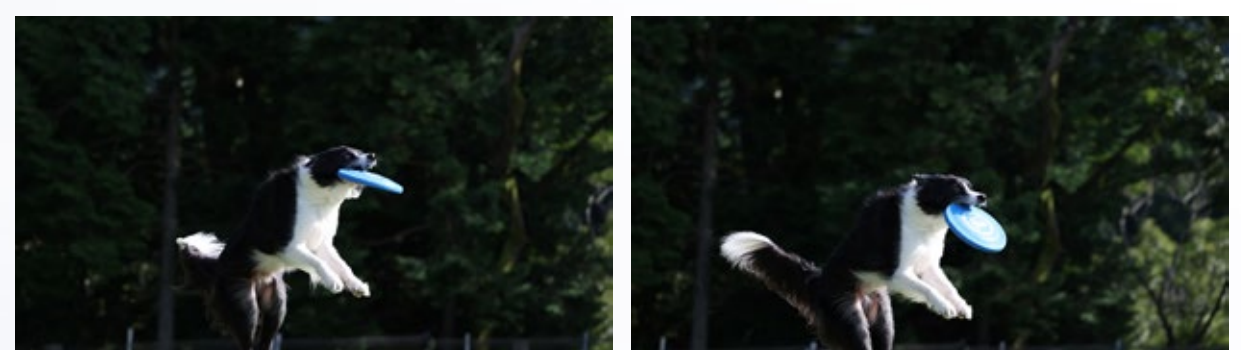
Pre-recording is also available to help you capture scenes 3 or 5 secs before the "Record" button is pressed. This can significantly lower the chances of missing crucial moments.

SHUTTER BUTTON PRESSED

WITH PRE-RECORDING

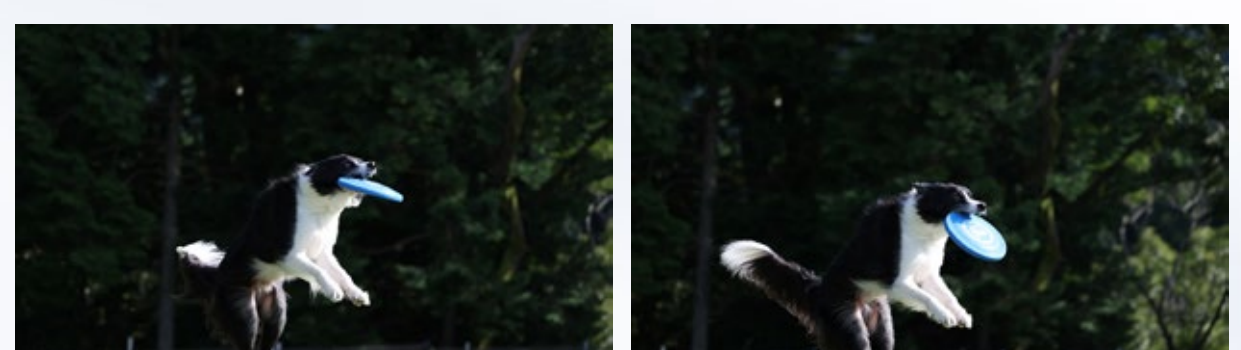


PRE-RECORDING (UP TO 5 SECONDS EARLIER)



RECORDING

WITHOUT PRE-RECORDING



RECORDING



PREV

MENU

NEXT

EXPOSURE MANAGEMENT TOOLS FOR MOVIE

Use the False Colour and Zebra Pattern available on the EOS R8 as your trusty assistant in scenes where exposure is difficult to gauge!



False Colour

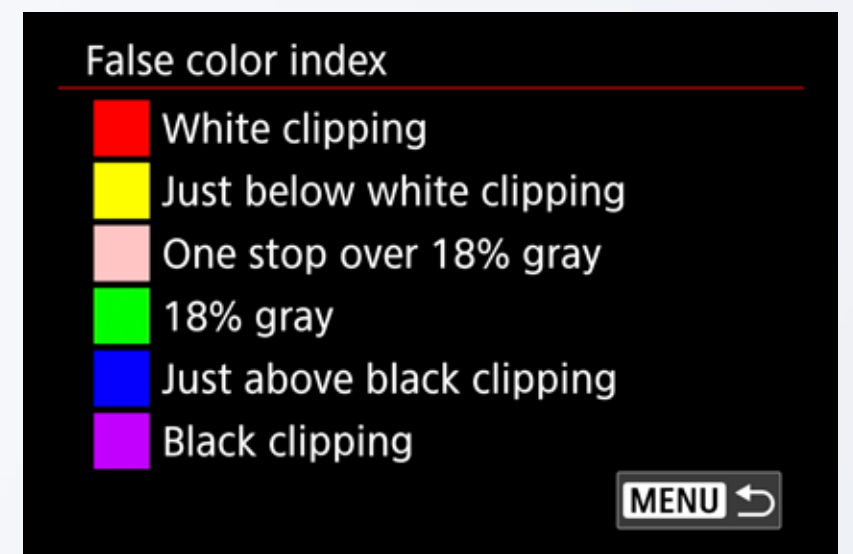


FALSE COLOUR - OFF



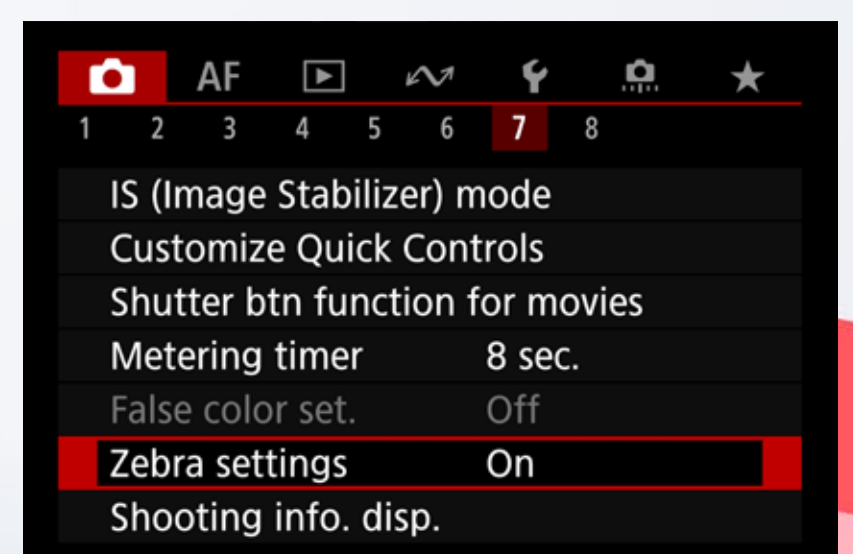
FALSE COLOUR - ON

False Colour, a function widely used in the Cinema EOS System, is also available on the EOS R8 to help identify the exposure state of the image, thereby allowing you to make the necessary adjustments to prevent underexposure and overexposure in your videos.

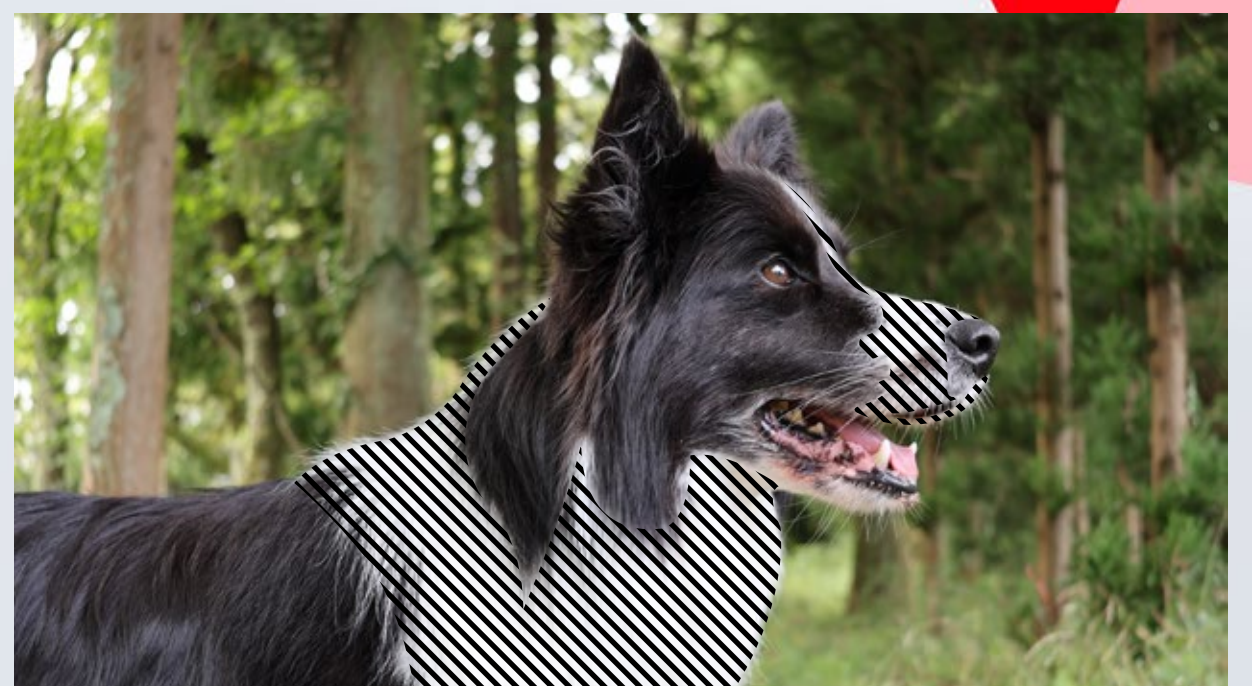


Zebra Pattern

Zebra Pattern is displayed on areas of the image where brightness levels match and/or exceed your preset levels. This visual tool can help to quickly indicate the need to suppress overexposure or blown highlights.



ZEBRA - OFF



ZEBRA - ON



PREV

MENU

NEXT

IMAGE STABILISATION

Focus Breathing Correction

Often, focus breathing occurs whenever we switch focus between subjects within the same frame. This creates noticeable changes in both angle of view and magnification. Thankfully, the EOS R8 can correct this phenomenon, ensuring your videos look seamless throughout. Based on the optical design value, the EOS R8 is able to correct changes in the field of view caused by focus breathing during movie recording.

Movie Digital IS

Get stable footage even if you shoot handheld! That's all thanks to Movie Digital IS, which helps to suppress camera-shake blur. Achieve even greater stability in your footage through coordinated control of Movie Digital IS and Lens IS[^] by pairing your EOS R8 with an RF lens equipped with Lens IS.

OPTICAL
IMAGE
STABILIZER
×
MOVIE
DIGITAL
IMAGE
STABILIZER

[^] When used with selected RF lens that supports coordinated control IS.

- 1 Horizontal Direction
- 2 Vertical Direction
- 3 Yaw Axis
- 4 Pitch Axis
- 5 Roll Axis



PREV

MENU

NEXT

CONNECTIVITY & LIVESTREAM SUPPORT



Wired & Wireless Connectivity Options

The EOS R8 can easily connect to both Android and iOS smartphones using a USB-C wired connection or wirelessly via Wi-Fi (2.4GHz) or Bluetooth Low Energy (LE) using the Canon Camera Connect app. This allows for remote shooting and high-speed transfer of video and image files to smartphones for upload to social media.



via
Canon Camera
Connect app



UVC/UAC Compatibility

With USB Video Class/USB Audio Class (UVC/UAC) support, the EOS R8 can serve as your webcam too! This convenient plug-and-play via USB requires no additional driver or software installation, while providing audio support and delivering high quality video with less noise for your livestreams.

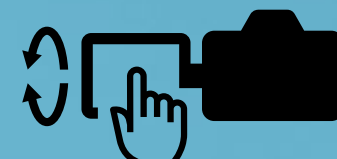


PREV

MENU

NEXT

ERGONOMIC DESIGN



Vari angle LCD

Designed for Reliable Operability

The dustproof and moisture-proof EOS R8 is sturdily built with polycarbonate exterior and magnesium-alloy chassis, making it highly suited for outdoor usage. An ergonomic design allows for swifter operation and improved reliability.

Photo/Movie switch for easy toggle between photo and movie modes

Multi-function shoe for mounting flash/video/audio accessories

Power switch relocated to top right to allow single-handed operation of key controls



USB Charging

2.36 million dots high-definition EVF

1.62 million dots vari-angle LCD

Accessory Options



Speedlite EL-5

External flash for creative lighting photography. A wireless, multi-flash setup is also possible.



Stereo Microphone DM-E1D

Cable-less digital stereo microphone exclusively designed for the new Multi-function shoe.



Smartphone Link Adapter AD-P1

Accessory for camera integration with Android smartphones.

PREV

MENU

NEXT

EXTENSIVE LENS OPTIONS

Complete Lens Flexibility

The EOS R8 is paired with an ultra-compact kit lens so you can create right away!

Being part of the EOS R mirrorless camera system means it is automatically compatible with a wide range of high-performance RF lenses exclusively designed for the RF mount. Additionally, it is also compatible with all existing EF and EF-S lenses via mount adapters. Take your pick from our full suite of lenses!



Kit Lens:
RF24-50mm f/4.5-6.3 IS STM

RF
LENSES

RF-S
LENSES

EF
LENSES

EF-S
LENSES

┌ Mount Adaptor ┐
└ Required ┘



PREV

MENU

NEXT

SPECIFICATIONS

TYPE		
Image sensor	24.2 megapixels, full-frame (36.0 x 24.0 mm) CMOS sensor	
Image processor	DIGIC X	
Lens mount	Canon RF mount	
Compatible lenses	Canon RF and RF-S lenses Canon EF and EF-S lenses (EF-EOS R mount adapter required)	
RECORDING SYSTEM		
Recording media	1 memory card • 1 x SD, SDHC, SDXC memory card (UHS-II compatible)	
Pixels recorded	RAW/C-Raw, HEIF, JPEG Large: Approx. 24.2 MP (6000 x 4000) HEIF, JPEG Medium: Approx. 10.6 MP (3984 x 2656) HEIF, JPEG Small 1: Approx. 5.9 MP (2976 x 1984) HEIF, JPEG Small 2: Approx. 3.8 MP (2400 x 1600)	
AUTOFOCUS		
Focus method	Dual Pixel CMOS AF II	
AF method	Spot AF, 1-point AF, Expand AF area (above/below/left/right/around), Flexible Zone AF 1/2/3, Whole area AF	
Available AF point positions	Stills	Max. 4897 positions (83 x 59)
	Movies	Max. 4067 positions (83 x 49)
Available AF areas when automatically selected	Stills	Max. 1053 zones (39 x 27)
	Movies	
Subject detection AF	EOS iTR AF X (Intelligent Tracking & Recognition) – Automatic / People Priority / Animal Priority / Vehicle Priority	
AF operation	Stills	One-Shot AF, Servo AF, AI Focus AF (set automatically in Scene Intelligent Auto mode)
	Movies	One-Shot AF, Movie Servo AF
Focusing brightness range	Stills	EV -6.5 to 21 f/1.2 lens (except RF lenses with a DS coating), center AF point, One-Shot AF, at room temperature and ISO 100
	Movies	EV -4.0 to 21 (4K) EV -4.5 to 21 (Full HD) f/1.2 lens (except RF lenses with a DS coating), center AF point, One-Shot AF, at room temperature. ISO 100, and 29.97/25.00 fps
EXPOSURE CONTROL		
Metering sensor	384 zones (24 x 16) metering using image sensor output signals	
Metering mode	Stills	Evaluative metering, Partial metering, Spot metering, Center-weighted average
	Movies	Evaluative metering (when faces are detected), Center-weighted average (when no faces are detected, when set to Canon Log 3)
Metering brightness range	Stills	EV -3 to 20 (at room temperature, ISO 100)
	Movies	EV -1 to 20 (at room temperature, ISO 100)
Shooting mode	Stills	Scene Intelligent Auto, Hybrid Auto, Special Scene Mode, Creative Filters, Fv, P, Tv, Av, Manual, Long Bulb Exposure*, Custom Shooting Modes (C1/C2) <small>*previously Bulb Exposure</small>
	Movies	Scene Intelligent Auto, Special Scene Mode (HDR Movie), Creative Filters, P, Tv, Av, Manual, Custom Shooting Modes (C1/C2)
ISO speed (recommended exposure index)	Stills	ISO 100-102400*, expandable to L (ISO 50), H (ISO 204800) (ISO 200-102400 with Highlight tone priority set) <small>*Expanded ISO cannot be set during HDR mode</small>
	Movies	ISO 100-25600* expandable to H (ISO 102400) (ISO 200-25600 with Highlight tone priority set) <small>*Expanded ISO cannot be set during HDR PQ movie, HDR movie or movie recording with shooting creative filters, or digital zoom set. *Default setting range when set to Canon Log 3 is ISO 800-25600, expandable to L(ISO 100-640) and H(32000-102400)</small>
Exposure compensation / AEB	± 3 stops in 1/3 or 1/2-stop increments	

PREV

MENU

NEXT

SPECIFICATIONS

HDR PQ		
Recording format	Stills	HEIF
	Movies	MP4
Bit depth		10-bit
Colour sampling		YCbCr 4:2:2
HDR standards		Rec. ITU-R BT.2100 (PQ)
SHUTTER		
Shutter mode		Electronic 1st curtain, Electronic
Shutter speed		Electronic 1st curtain: 1 / 4000 secs. - 30 secs. Electronic shutter: 1 / 16000 secs. - 30 secs. Movie recording: 1 / 8000 secs. - 1 / 25 secs.
X-sync		Electronic 1st-curtain: 1 / 200 secs.
DRIVE SYSTEM		
High-speed continuous shooting		Electronic 1st curtain shutter: Max. approx. 6* shots / sec. Electronic shutter: Max. approx. 40 shots / sec. <small>*If flicker is detected, continuous shooting will slow down even when anti-flicker shooting is turned off</small>
MOVIE RECORDING		
Movie recording size		4K UHD (3840 x 2160) (Uncropped/Cropped) Full HD (1920 x 1080) (Uncropped/Cropped)
Frame rate		4K UHD/4K UHD Crop: 59.94p / 50.00p / 29.97p / 25.00p / 23.98p 4K UHD time-lapse: 29.97p / 25.00p High frame rate movie Full HD: 179.82p / 150.00p / 119.88p / 100.00p Full HD: 59.94p / 50.00p / 29.97p / 25.00p / 23.98p Time-lapse Full HD: 29.97p / 25.00p HDR movie Full HD: 29.97p / 25.00p Creative filters Full HD: 29.97p / 25.00p / 23.98p
Canon Log		Canon Log 3
SCREEN		
Screen type		Vari-angle, TFT colour, LCD touch screen
Screen size and dots		7.62 cm / 3.0 in. (3:2) with approx. 1.62 million dots
VIEWFINDER		
Viewfinder type		OLED colour electronic viewfinder
Viewfinder size and dots		1.0 cm / 0.39 in. (3:2) with approx. 2.36 million dots
COMMUNICATION FUNCTIONS		
Wi-Fi	Standards compliance	IEEE 802.11 b/g/n equivalent
	Transmission frequency (Center frequency)	2.4GHz band (2412-2462 MHz)* <small>*Specifications may vary by country and region.</small>
	Compatible devices	Smart devices, computer and FTP server
Bluetooth		Bluetooth Ver. 4.2
INTERFACES		
Digital terminal		SuperSpeed Plus USB (USB 3.2 Gen 2) equivalent, USB Type-C
HDMI output terminal		Type D, supports 4K 60p output
External microphone input & headphone terminal		Available
Remote control terminal		Available
POWER		
Battery		LP-E17
DIMENSIONS AND WEIGHT		
Dimensions (W x H x D) (CIPA compliant)		132.5 x 86.1 x 70.0 mm
Weight (CIPA compliant)		Approx. 461g / 16.26 oz. (including battery and memory card)

All data above is based on Canon testing standards and CIPA (Camera & Imaging Products Association) testing standards and guidelines. Dimensions and weight listed above are based on CIPA Guidelines. Product and appearance are subject to change without notice. If a problem occurs with a non-Canon lens attached to the camera, contact the respective lens manufacturer.

PREV

MENU

NEXT

EOS R8

Canon

Delighting You Always

This document is for information only and the contents are subject to change without notice. Errors and omissions excepted. Images are simulated. Weight and dimensions are approximates. Nothing in this document should be construed as a warranty. Product/Service options, name and availability may vary by region. We expressly disclaim any liability or contractual obligations with respect to this document. Canon and EOS, among others are trademarks of Canon Inc. and/or its affiliates. Other names, marks and logos contained in this document may be the registered trademarks or trademarks of their respective owners.



SNAPSHOT.CANON-ASIA.COM
HTTPS://ASIA.CANON

Find out more ▶