

EOS

Canon

Delighting You Always



EOS R50 V

Real Vlogs, Real You

「 BE A BETTER VERSION OF YOU 」



Contents

-
- 01 New Design >

 - 02 Image Processing System >

 - 03 Advanced Movie Performance >

 - 04 Express with Creativity >

 - 05 Autofocus (AF) Optimised for Movies and Still Images >

 - 06 Livestream and Connectivity >

 - 07 Interchangeable Lenses >

 - 08 Connectivity and Accessories >

 - 09 Specifications >

「Hello」 Creators.

Take your content creations to new heights.

Designed for aspiring content creators curating extraordinary content, the **EOS R50 V** comes in a new stylish, minimalistic design packed with exciting features for videos and stills. Shoot and express your stories with greater creative freedom, captivate your audience with stunning images and authentic vlogs.

Have the confidence to venture ahead through an incredible way to shoot. With the EOS R50 V, a better version of you awaits.



A Stylish Design

Be the creator whose gear is the talk of town. The EOS R50 V boasts a revolutionary sleek, minimalistic design optimised for video content creation unlike any EOS camera. A flat body and simple grip allow for more comfortable handling during vertical shooting. The lightweight and compact body, paired with the new RF-S14-30mm f/4-6.3 IS STM PZ kit lens, lets you shoot longer with less fatigue.

*Available in:

WHITE

BLACK



01 FRONT RECORDING BUTTON

NEW

Front placement for convenient selfies and vertical shooting.

02 MAGNESIUM ALLOY BODY

Built for reliability, with excellent internal heat dissipation for longer shoots.

03 VERTICAL TRIPOD MOUNT

NEW

Better balance for vertical shooting on a tripod grip.

04 POWER ZOOM LEVER

NEW

For smooth zooming in videos with compatible lens.

05 TALLY LAMP

Always know when you are recording as well as the camera status.

*Colour availability may differ by country and region.



A Stylish Design

01 3-MIC NOISE REDUCTION SYSTEM
Eliminates unwanted noise.

02 MULTI-FUNCTION SHOE
Pairs with a wide range of accessories.

03 MODE DIAL
Switch between movie or image shooting quickly.

04 LIVESTREAM BUTTON
Quick and convenient access to livestreaming menu.

05 VARI-ANGLE TOUCHSCREEN
For easier selfies and unique perspectives. Shooting information can be rotated automatically when camera is held vertically.

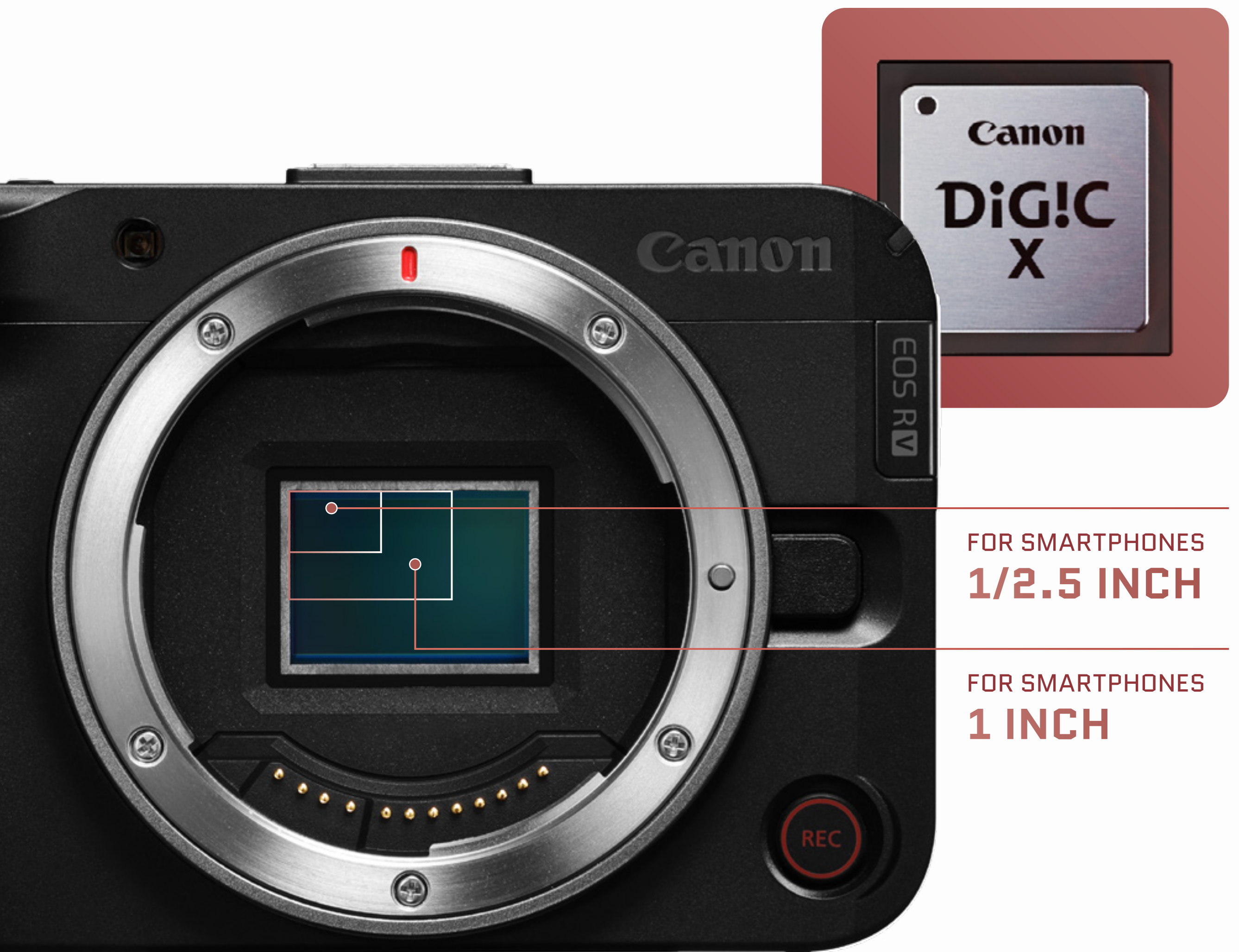


Image Processing System

24.2^{MEGA}
PIXELS
CMOS

Equipped with a 24.2MP APS-C sensor and paired with the DIGIC X image processing engine, the EOS R50 V captures footages and still images that highlight subjects beautifully, keeping image details sharp even when enlarged with rich and natural bokeh.

The EOS R50 V's sensor size is similar to the Super35mm sensors in many cinema cameras such as the EOS C70, making it significantly larger than the sensors found in smartphones.



FOR SMARTPHONES
1/2.5 INCH

FOR SMARTPHONES
1 INCH

High ISO Sensitivity

The large sensor also allows for a normal ISO of 100–32000, with a max ISO value of 12800 for videos and 32000 for photos. This produces visuals with minimal noise even in low light conditions, so you can shoot with faster shutter speeds, reducing camera shake and subject blur for indoor or night scenes.

ISO
32000
12800

MOVIE STANDARD

ISO 12800

STILL IMAGE STANDARD

ISO 32000



Step into Pro

Shoot like the pros with full range of movie-making features used in professional film and documentary production. Recreate the experience of the moment for your viewers through cinematic footages, or give your vlogs the authentic touch that best represent your vibe with even greater creative expressions.

4K 29.97/25.00
/23.98P

FULL HD 119.88
/100.00P

4K CROP 59.94
/50.00P



4K with 6K Oversampling

4K

Images are read in 6K quality and resized to 4K for video recording, providing outstanding colour reproduction and crisp details. Since the angle of view is uncropped, you can capture wide – from vast cinematic landscapes to dramatic indoor settings.

The EOS R50 V also provides 4K60p Crop, supporting shooting at a higher frame rate, resulting in smooth, sharp and dramatic footages.

FHD120p High Frame Rate Movies with Audio

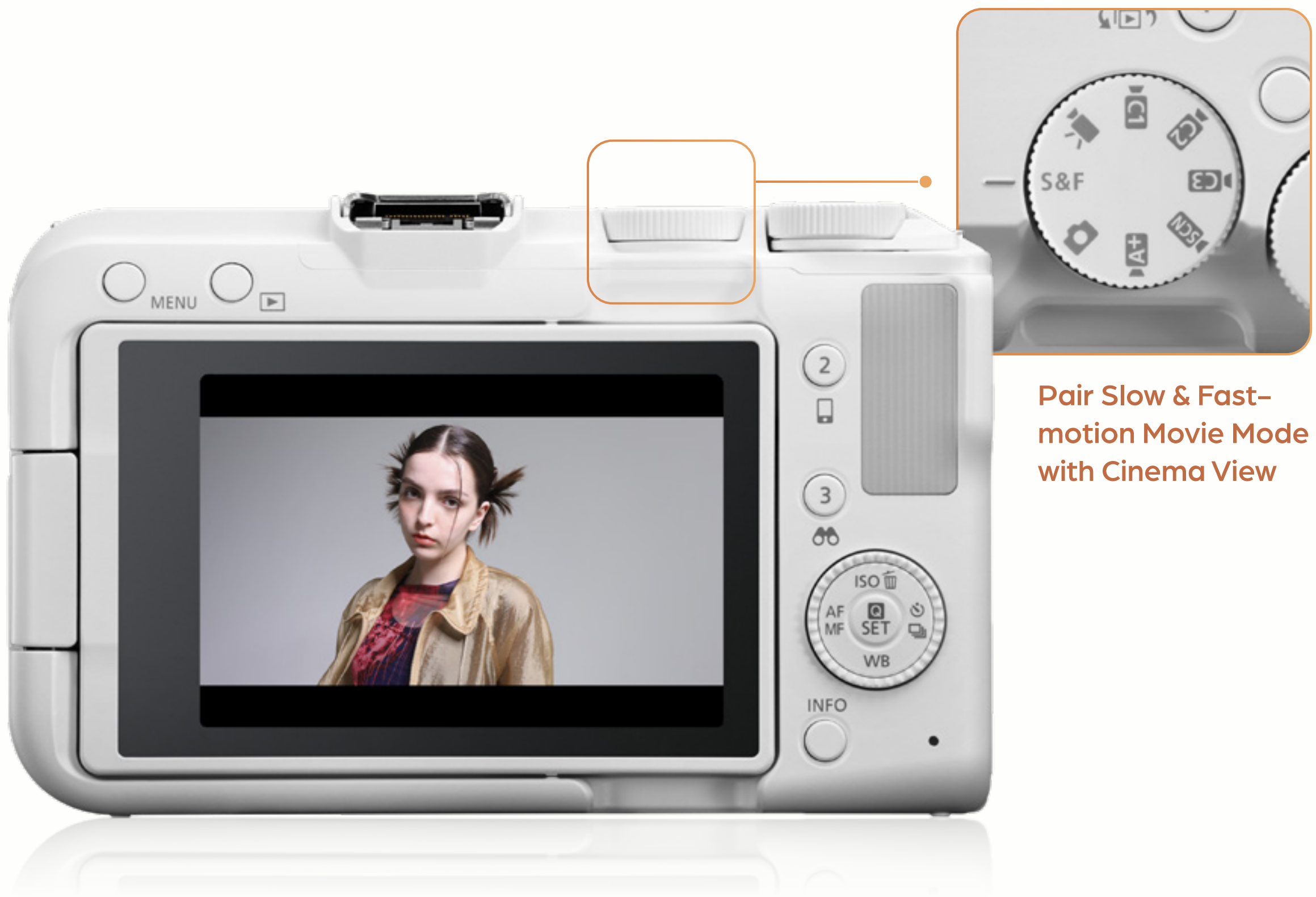
120p
High Frame Rate
HD Movie

The EOS R50 V shoots high frame rate movies in Full HD with audio, allowing you to capture scenes in dramatic slow motion with audio for enhanced post-production editing effects.



Slow & Fast-motion Movie Mode

Create dynamic and emotive movies easily. This dedicated mode, which is easily accessible on the Mode Dial, lets you film slow-motion scenes in Slow mode, emphasising movements and actions for a dramatic look; or record an entire scene over long durations to increase the pacing of your videos with Fast mode. You can also capture time-lapse of scenes at 60x Fast (NTSC) in Full HD.



Pair Slow & Fast-motion Movie Mode with Cinema View

Cinema View

Create a film-like atmosphere in your movies with Cinema View. Toggling this mode enables you to record in 2.35:1 aspect ratio and a frame rate of 25p similar to cinema cameras with a narrower framing. Further combine with colour filters and Slow & Fast-motion Movie Mode to achieve a cinematic experience for your audience.

Professional Movie UI

Multiple professional video display settings are also available on the EOS R50 V. Features such as Zebra Display, False Colour and Level Display let you refine the details such as exposure settings, so your footages turn out the way you envision them.



Special Scene Mode

Specific shooting modes that make you and your videos look good effortlessly when you are vlogging or filming your subject. Choose from three modes that provide tailored settings to suit your scene.

SMOOTH SKIN MOVIE MODE



Select from 5 levels of Skin Smoothing Effect with natural enhancements to make blemishes and pores less noticeable, so you or your subject look good in vlogs.

MOVIE FOR CLOSE- UP DEMO MODE



For vlogs where you need to introduce products, food or other items, the EOS R50 V will intuitively shift focus to the closest subject on screen automatically.

MOVIE IS MODE



Record stable footages with less camera shake when you are shooting while moving. This also supports the Auto Level feature that keeps footages leveled.

High Quality Audio Input

Audio quality that is crisp and clean. The 3-mic noise reduction technology in the EOS R50 V reduces AF drive noise from the camera during autofocusing. A 4-channel audio input support is provided for added flexibility to combine with an external microphone via the multi-function shoe or input terminal to record clear-sounding dialogues.

Long Recording Duration

With up to 2 hours* of continuous non-stop recording, the EOS R50 V lets you shoot for longer durations with efficient camera internal heat dissipation, giving you confidence in maintaining momentum when creating your content. This is ideal for longer vlogs, livestream or time-lapse footages with no interruptions.

XF-HEVC S / XF-AVC S Recording Formats

XF-HEVC S
XF-AVC S

For a more professional workflow, the EOS R50 V allows you to shoot high quality footages while offering high data compression, giving you more storage space for more shots throughout the day.

*Measurement conditions: Temperature: 23°C / 73°F, Type of recording: On-screen recording, RF50mm f/1.8 STM, Movies: Card recording *Except streaming over USB(UVC/UAC), Wi-Fi: Not used, Power source: DR-E18+AC-E6N, without power over USB.

When USB(UV/UCAC) connection streaming, LP-E17 with power over USB.



Expressive Videography

Elevate your creative capabilities and explore from a suite of imaging modes that expresses cinematic and realistic moments. Choose from a wide range of customisable settings that give creative freedom beyond just recording ordinary content.

CUSTOM PICTURE

CP

Pro imaging features used in film and documentary production.

MOVIES

PICTURE STYLE



Reproduce natural colour tones according to subject and scene.

MOVIES

STILLS

COLOUR FILTER



Film with creative colours easily with presets wherever you go.

MOVIES

STILLS

Custom Picture

Offering cinema-grade picture consistency with Canon Cinema EOS, Custom Picture in the EOS R50 V lets you fine tune the way your output footages look.

Five presets are available including Canon 709 gamma setting, which lets you shoot directly from the camera with little to no colour grading, reproducing vibrant visuals and smooth skin tones.

No.	Gamma / Colour Space	Colour Matrix
C1	Canon 709 / BT.709	Neutral
C2	Canon Log 3 / Cinema Gamut	Neutral
C3	PQ / BT.2020	Neutral
C4	HLG / BT.2020	Neutral
C5	BT.709 Standard / BT.709	Video
C6–C20	User custom	User custom



Custom Picture

Canon Log 3

Similar to pro-level movie editing, Canon Log 3 gives you the full range of flexibility in colour grading and a wide dynamic range while suppressing noise in dark areas. Craft your visuals with ease by adjusting individual colour tones that best express your style.



True-to-life Skin Tones

Realistic skin tones that flatter you and your subjects. The EOS R50 V's image processing lets you capture smooth and clear skin tones in any scene, along with adjusting white balance to reproduce colour hues to give your content and vlog a natural look.



Custom Picture

Look Up Table (LUT)

For creators looking to achieve a distinct colour or visual style, you can preview your footage with LUT colour presets while recording in Canon Log 3 or Cinema Gamut, making post-shoot colour grading more efficient.

Shot with Canon Log 3 / Cinema Gamut



LUT application example (using BT.709)



Custom Picture | Look File (.cube)

Look File setting: Apply any LUT to Custom Picture



Colour Filters

Expressive colours instantly on the go. Pick from 14 in-camera filters and preview them easily before shooting, so your videos are ready for sharing after shooting without the need for colour grading.



Color Filter

Colour Filter Application Examples



StoryTeal&Orange

StoryTeal&Orange, StoryMagenta, StoryBlue, PaleTeal&Orange

Ideal for bright outdoors, shaded buildings and to create cinematic shadows.



RetroGreen

RetroGreen, Sepiatone, AccentRed

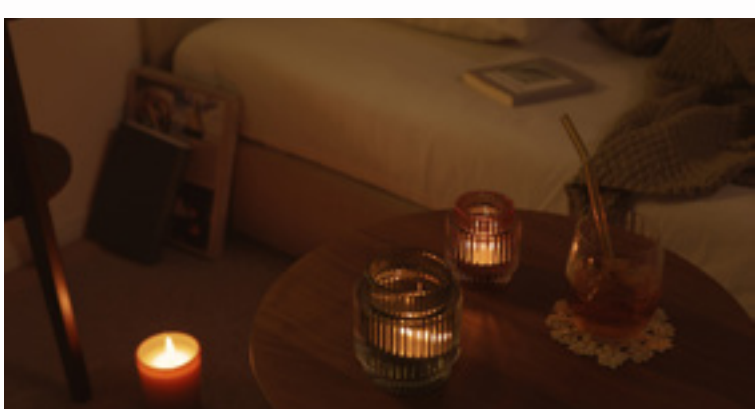
Ideal for urban scenes and to inject nostalgia.



TastyWarm

TastyWarm, TastyCool

Ideal for culinary subjects and increasing saturation levels.



BrightAmber

BrightAmber, BrightWhite

Ideal for indirect lighting, low-light conditions, night scenes and to create a brighter visual.



ClearLightBlue

ClearLightBlue, ClearPurple, ClearAmber

Ideal for dark scenarios with some lighting and reducing contrast between dark and bright areas.



Always in Focus

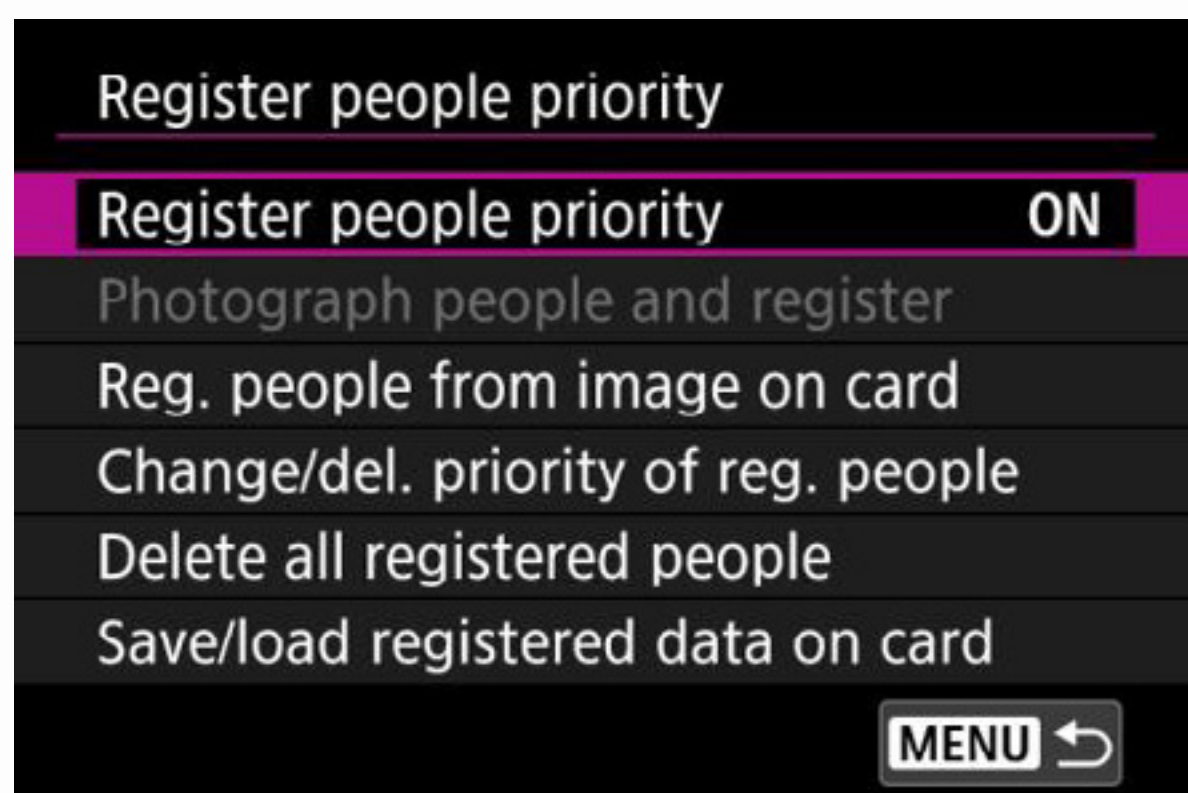
The highly precise and smooth AF capabilities in the EOS R50 V let you track subjects and keep them in focus effortlessly in movies and still imaging. Similar to pro-level cameras, the Dual Pixel CMOS AF II recognises and tracks subjects intuitively, allowing you to concentrate on composing and shooting great content.

Register People Priority

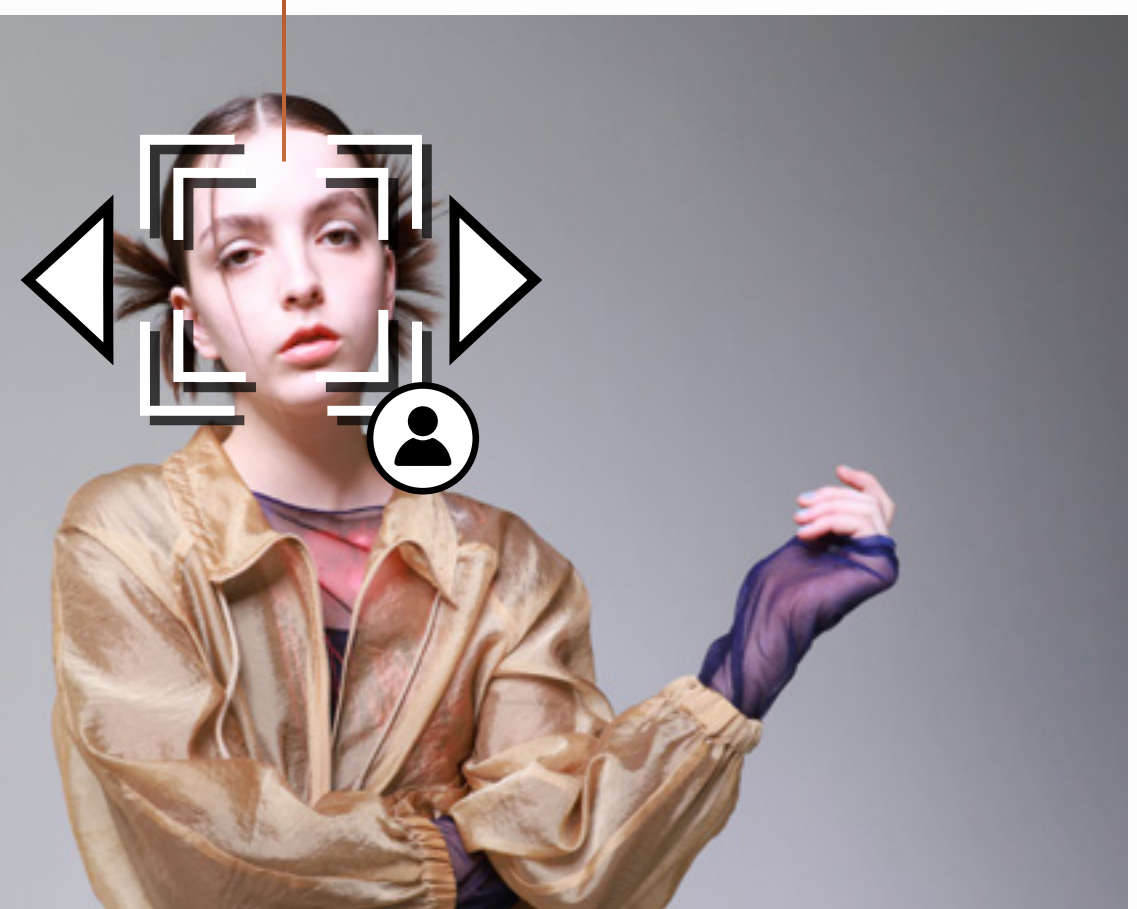


Advances in register people priority

Prioritise focus on specific subjects by pre-registering them in advance and your EOS R50 V can detect their profile and keep them in constant focus. This persistent AF tracking is particularly useful for keeping the subject in consistent focus even in a crowded scene, such as during team sports or group performances. You can register people in two ways – taking a photo of the subject in advance and register, or register their faces from an image in the camera.



Tenaciously tracks a subject over a wide area



Subject Detection

Besides humans, animals (cats/dogs) and vehicles, the advanced AF of the EOS R50 V can also recognise and detect other subjects such as horses, airplanes and trains, giving you sharp images when they are in motion and broadening your genre of content creation.



Focus Breathing Correction

Pair your EOS R50 V with the RF-S14-30mm f/4-6.3 IS STM PZ kit lens or any supported Canon RF lens to automatically compensate for changes in the angle of view caused by focus position movement. This gives a natural-looking footage with minimal distortions from focus shifts during video recording. This function is also applicable to Movie for Close-up Demo, making your content natural to watch.



RF-S14-30MM F/4-6.3
IS STM PZ KIT LENS

MOVIE FOR
CLOSE-UP DEMO

High-Speed Continuous Shooting

With the Dual Pixel CMOS AF II, the Canon EOS R50 V features quick and accurate tracking for stills photography as well. The advanced AF locks on to subjects in motion and maintains persistent focus, keeping your subjects sharp. The high-speed continuous shooting allows you to capture burst shots at up to 15fps with electronic shutter, so you can capture quick moments as they unfold.

Upto
15
Frames
Per Sec

UP TO **15 FPS**



EYE DETECTION



Share with the World. Four Ways to Stream

A new livestreaming button on the EOS R50 V gives you direct access to four ways of livestreaming connectivity. Whether you are at your stationary workstation or on the go, the EOS R50 V's versatile connectivity lets you go live anywhere, anytime.



01 USB Connection

Stream or video call by connecting a USB cable from your EOS R50 V to your computer, which also powers the camera directly for long hours of live-streaming.

02 HDMI Connection

Connect your EOS R50 V with a HDMI live-stream switcher, useful for multi-angle shooting with multiple cameras.

03 Camera Connect App

Livestream wirelessly anywhere. Pair your EOS R50 V with your mobile device to go live instantly on the go.

04 Live Switcher Mobile App

Place your EOS R50 V with your smartphone at various angles to quickly switch between multiple point of views when recording.



Camera Connect App



Particularly useful for travels and outdoors, this app lets you preview, manage and transfer images or videos wirelessly anywhere. Pair your EOS R50 V with your smartphone or tablet to transfer files instantly without the need for a computer.

Remote Shooting

With multiple shooting options controllable from your mobile device, you can perform remote shooting with a live view of the scene and operate your EOS R50 V from a distance. You can also browse images or footages taken immediately, without the need to preview on camera.

Wireless File Transfer

Manage and transfer video footages or images with ease. Simply pair your EOS R50 V to your smartphone or tablet to preview, select and transfer them on the go.



Live Switcher Mobile App



Particularly useful for cooking, live gaming, dancing and more, this app enables you to stream a multi-angle video with your mobile device as the controller. By combining multiple camera recordings into one stream, you can place your EOS R50 V with other devices such as smartphones at various angles to quickly switch between multiple point of views, resulting in a professional-looking livestream.

Kit Lens: RF-S14-30mm f/4-6.3 IS STM PZ

RF-S
Lenses

The perfect match for your EOS R50 V. The first RF lens with a built-in power zoom, the RF-S14-30mm f/4-6.3 IS STM PZ is a compact and sleek lens that lets you achieve cinematic-style zooming effect. Zooming can be performed on both the EOS R50 V's zoom lever or the zoom ring on the lens, with 15 adjustable speed levels in both slow and fast modes. Customisation of speed can be made for the zoom lever and zoom ring separately.

Wide Angle of View

Designed to cover a wide range of shooting styles useful for vlogs and scenic landscapes, the wide focal length of 22-48mm (in 35mm format) captures natural looking footages with minimal distortions.

Compact and Lightweight

At just 181g, the RF-S14-30mm f/4-6.3 IS STM PZ feels light on hand. The lens body does not extend when zooming, providing good balance and stability handheld or on a gimbal.

EOS R50 V APPROX. **370** / Black

+ **373G** White

KIT LENS APPROX. **181G**

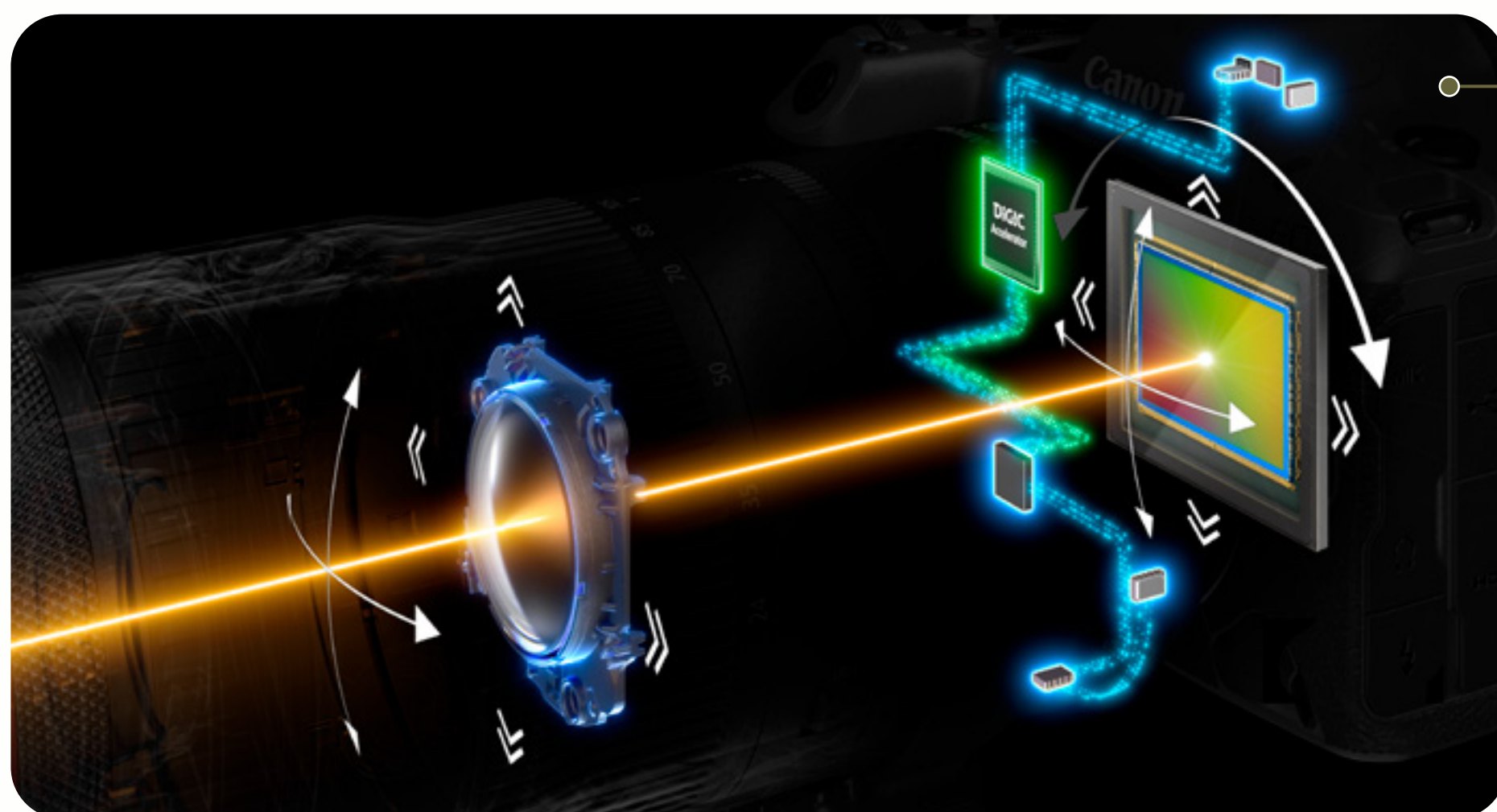
= APPROX. **551** / Black
554G White

(Including card and battery)



In-lens IS

The stabilising system pairs with your EOS R50 V's Movie Digital IS, providing even greater stability in handheld shooting, actively compensating camera shake when you shoot while walking.



IN-
LENS **IS**

+

MOVIE
DIGITAL **IS**

Future-ready with RF Lens

Expand the way you shoot to create better versions of content every time. The RF mount on the EOS R50 V is not only compatible with RF-S lenses optimised for the APS-C sensor, it also opens you to a diverse range of full-frame RF prime, zoom, VR lenses and more, letting you refine your creative ideations and your capabilities where inspiration brings.



Content Creation Accessories

Pair your EOS R50 V with accessories* to further enhance your setup for engaging content. Pair microphones for crisp audio recording, and Canon's tripod grip is a good companion for all your content creation adventures.

HG-100TBR Tripod Grip

An essential for your EOS R50 V. The tripod grip provides a convenient way for handheld shooting, whether you are doing a panning shot or vlog, this comfortable grip gives you more dynamic ways to shoot from high or low angles. The grip opens into a tripod so you can sit the camera in both orientations, and the remote controller lets you control shooting operations from a distance.



The EOS R50 V's vertical and horizontal tripod mounts allow for enhanced versatility.

* Accessories sold separately

Directional Stereo Microphone DM-E1D

The digital directional stereo microphone provides clear audio from a designated source powered directly from the multi-function shoe. It offers switchable directivity and can be used as a shotgun mic, useful in minimising background noise during interviews and wildlife videography.



XLR Adapter

For more professional audio set up, this adapter connects the camera with a XLR microphone that uses professional phantom power, enabling footages with more authentic audio.

Camera Effective Pixels	24.2 Megapixels (APS-C)	
Image Processing Engine	DIGIC X	
Standard ISO Range (Still Images)	Stills: 100 – 32,000, (H: 51,200) Movies: 100 – 12,800, (H: 16,000, 20,000 or 25,600)	
Autofocus	AF Points (AF areas when automatically selected)	Stills: 651 Movies: 527
	Focusing Brightness Range	Stills: EV -5.0 to 20 Movies: EV -2.5 to 20 (4K 30p) EV -3.0 to 20 (FHD 30p) *With an f/1.2 lens (non Defocus Smoothing coating), centre AF point, One-Shot AF at room temperature, ISO 100, and for movies: 29.97p / 25.00p
	Subject Detection	Auto People Animals (dog / cats / birds / horses) Vehicles (cars / motorcycles / aircraft / trains)
	Register People Priority	Up to 10 people can be registered
Drive (Max.)	Electronic shutter approx. 15 shots/sec. Electronic 1st curtain approx. 12 shots/sec.	
Shutter Speed	Shutter Speed	Electronic shutter 1/8,000 sec. Electronic 1st curtain 1/4,000 sec.
	Flash Sync Speed	1/250 sec.
Movie Recording Methods	Compression Format	H.264 / H.265 (MP4)
	Audio Recording Method	LPCM 4CH / AAC 2CH
	Profile	Canon 709 / Canon Log 3 / PQ / HLG / BT.709 Standard

Movie Recording	4K 30p (Oversampled from 6K) 4K 60p (Cropped)	
High Frame Rate	Slow & Fast-motion Movie Mode: Full HD 119.88p (without audio) Regular movies: Full HD 119.88p (with audio)	
HDMI Output	4k 60p (Cropped)	
Live Streaming Services	USB (UVC/UAC) HDMI Camera Connect streaming (wireless LAN) Live Switcher Mobile streaming (wireless LAN)	
Live Streaming Output	USB/ HDMI: Up to 4k 60p (Cropped) Camera Connect: FHD 60p Live Switcher Mobile: FHD 30p	
Card Slot	SD / SDHC / SDXC (UHS-II Compatible)	
LCD Monitor	3.0 in. / 1.04 million dots / Vari-angle touchscreen	
Wi-Fi	IEEE 802.11b/g/n/a/ac (2.4GHz/5GHz* bands) *Specifications may vary by country/region	
Bluetooth	Version 5.1	
USB Terminal	Type-C (USB 3.2 Gen 2)	
Power Supply	Battery	LP-E17 battery pack
	Charger	USB Power Adapter PD-E2/E1
	No. of Still Images	Approx. 480 (LCD)* ¹ (No EVF)
	Movie Recording Time	Approx. 70 min. (4K 30p)* ² Approx. 140 min. (Full HD 30p)* ²
Size (W x H x D, mm)	Approx. 119.3 x 73.7 x 45.2 mm	
Weight (Including card and battery)	Black: Approx. 370 g White: Approx. 373 g	

*1 CIPA standard.

*2 When Movie Servo AF: Disable is set, at 23°C, with a new and fully charged LP-E17 battery pack.



EOS R50 V

Canon

Delighting You Always



CANON IMAGING ASIA



CANON IMAGING ASIA



@CANONASIA

SNAPSHOT

SNAPSHOT.CANON-ASIA.COM

DISCLAIMERS

This document is for information only and the contents are subject to change without notice. Errors and omissions excepted. Images are simulated. Weight and dimensions are approximates. Nothing in this document should be construed as a warranty. Product/ Service options, name and availability may vary by region. We expressly disclaim any liability or contractual obligations with respect to this document. Canon and EOS among others are trademarks of Canon Inc. and/or its affiliates. Other names, marks and logos contained in this document may be the registered trademarks or trademarks of their respective owners.